

# BTP National Policing Plan Objectives

Protect the railway environment from the impact of terrorist attacks

Tackle serious violent crime and robbery on the railway for passengers and staff

**-44%**  
against last year for sentinel offences

**24%**  
Knife enabled crimes

**-78%**  
Violence with Injury (-649)

**-53%**  
Robbery (-156)

**41%**  
Solved Rate

- Robbery between July-September is trending similar to 2019/20. Knife enabled crime accounts for a higher proportion this FY

Partnership working focused at key locations with volume crime

**Midlands -57% - 201 fewer crimes** (BNS, Coventry & Nottingham)  
**Pennine -62% - 297 fewer crimes** (60Leeds, Manchester & Liverpool Lime St)  
**Wales -41% - 61 fewer crimes** (Cardiff, Newport, Shrewsbury, Swansea Pontypridd, Rhyl)  
**Western -46% - 81 fewer crimes** (Reading, Slough & Bristol Temple Meads)  
**North -59% - 264 fewer crimes** (St Pancras / Kings Cross, Liverpool Street, Bedford / St Albans)  
**South -47% - 303 fewer crimes** (Victoria & London Bridge)  
**Central -78% - 960 fewer crimes** (various lines of route across LU)  
**D Division -52% - 50 fewer crimes** (Edinburgh Waverly & Glasgow Central)

Crime Groups at Business as usual (BAU) or close to BAU

B Div: – Criminal Damage, Line of Route TPP, Motor Vehicle, Burglary & Theft Railway & Serious Public Order  
 C Div: Graffiti, TPP, Pedal Cycle, Serious Public Order, Theft Cable & Plant  
 D Div: Line of Route (Serious), Theft Cable & Plant, Motor Vehicle, Criminal Damage

Reduce disruption through problem-solving activity at trespass locations

**-42%**  
Decrease in incidents at top 10 trespass locations (215/125)

**-71%**  
Decrease in lost minutes

**19**  
arrival time at fatalities

**95 min**  
Mins handback (Non Suspicious)

**100 min**  
Mins handback (for all fatalities)

- Numbers of Vulnerable individuals remain stable compared to previous year despite drop in passenger footfall

Protect, support and safeguard vulnerable people and those at risk of harm encountered on the railway network

Q2 Vulnerability concern reports	
1020	Adults at Risk
2405	Children and Young Persons
571	Lifesaving interventions
434	S136/S297
42	Modern Slavery

County lines Activity July-September (Inc HO Arrests)				
<b>280</b> Taskforce Arrests	<b>128</b> Drug Seizures	<b>46</b> Weapons Seizures	<b>48</b> Child and Young Person Submissions	<b>13</b> National Referral Mechanism Referrals
<b>102</b> CL Arrests	<b>£83,173</b> Cash Seizures	<b>169</b> Phones	<b>14</b> Adults At Risk Submissions	<b>107</b> Joint Ops

# Overall/General Challenges

## Current Demand

- 🚶 Footfall across rail and London Underground has fallen by 65% this year, with approx. 13 million fewer passengers travelling every day
- 📞 As anticipated with footfall reduction incidents have reduced by 30%, but emergency calls continue to impact on BTP at 86% of 2019 levels
- ✉️ 61016 texts are down from an average of 133 per day to 65
- 📺 Recorded crime is up to 47% of 2019 levels and increasing every week
- 👮 Officers are completing on average 601 face covering interventions and 42 Directions to leave per day
- 👮 In total there have been 118 Face covering FPN's issued
- 🧠 Some crime areas and vulnerability demand continue to remain similar on BTP despite the reduction in footfall seen

## Forcewide

- **Increase risk of public protest-** Black lives matter and anti-covid restriction demonstrations from groups continue to ago across the country and are and growing in size. As we slip back into more restrictions and financial hardship, this matters will continue to grow.
- **Supporting the railway to re-establish order on the railway network.** Due to COVID restrictions passengers have become used to not being challenged for tickets by TOC staff. As TOC's re introduce revenue operations and Travel Safe Officers (TSO's) to support Covid regulations, it is likely that **verbal and physical abuse towards railway staff will increase.**
- **Vulnerability – increasing calls to safeguarding incidents** puts additional pressure on existing resources, with a lack of support from mental health provision, meaning operational resources end up managing the risk
- **COVID related sickness, absences, welfare** and training issues will be a challenge between October – January

## C Division

- Graffiti- offences are 13% up year to date
- Policing Slough/Maidenhead – increase in geography without the additional resource to match it
- Acquisitive crime – continues to be a key crime type although spread out and likely to increase as the economy struggles

## B Division

- Detection of violent crime and serious public order.

## D Division

- COVID-19: Restrictions have meant that attempts to arrest and interview suspects have been interrupted and inhibited.
- Custody centres refused to accept suspects identified through enquiries. Suspects who previously would have been held to appear at Court were released, increasing the risk of re-offending on rail network.
- There have been delays and postponements of Court dates and halts imposed on the proactive execution of warrants.
- Stonehaven Derailment: Resources in CID have been split between BAU and those working on the Stonehaven derailment and this is a resourcing challenge which could continue for a number of years.

# Appendices

## *Protect the railway environment from the impact of terrorist attacks*

---

The Force's specialist assets have continued to support the National effort in policing COVID legislation across the Great Britain, while continuing the focus on protective security, ensuring the Rail network remains as safe as possible

The Disruptive Effects Officers (DEOs) continue to be busy across the country with several high-profile arrests. This has seen a large number of weapons removed from the network. They have also taken part nationally with County Lines Week of Action and Sexual Offence Days of Action, assisting Divisions with these issues. Their work has also continued on the delivery of the "Initial Behavioural Detection" course to Divisional and student officers across the country - This has resulted in more trained DEO officers across the rail network to focus on CT threat and other Crime issues.

The team of Counter Terrorism Security Advisors (CTSAs) are in the process of preparing a CT awareness course that can be delivered to TOC staff via TEAMS.

# Tackle serious violent crime and robbery on the railway



There have been **1127 Op Sentinel crimes** Year To Date (YTD)  
44% reduction compared to same period last year, (-649 offences).

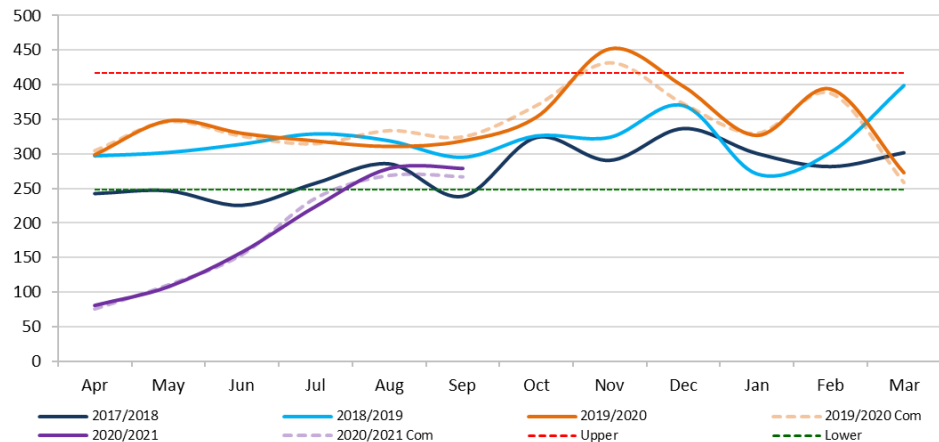
Solved rate is currently 41%

Offences involving a knife account for 24% (75)



Op Sentinel	YTD	PYTD	diff
Robbery	297	453	-156
Violence with Injury	830	1479	-649
<b>Forcewide</b>	<b>1127</b>	<b>1932</b>	<b>-805</b>

Op Sentinel

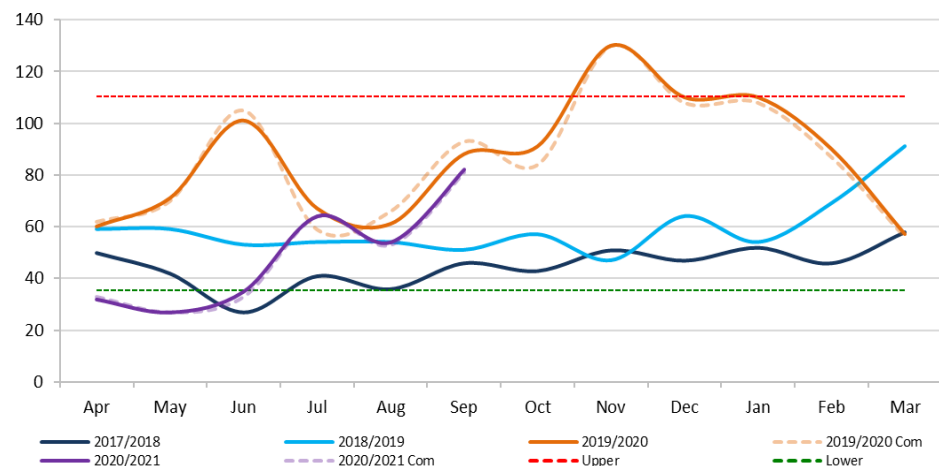


Operation Avara a joint disruption operation targeting train stations across South East London and North Kent has resulted in 145 arrests and 56 weapons being seized. 'Operation Avara', run by BTP's Metro Proactive Team, Met teams and Kent Police along with Southeastern Railway, has run for 12 months, starting in August 2019, tackling violence centered around transport hubs. Officers were based at various locations on days of action

These proactive operations also utilised tactics such as Stop and Search and officers specially trained in spotting those with criminal intent.

So far, the operation has seized 56 weapons including three firearms, 36 knives and 17 others including police-style batons and knuckledusters. In one instance, officers stopped a man travelling with a military-style commando knife - the knife was immediately seized and the man was arrested. He was sentenced to 12-weeks in prison. The arrests varied from individuals wanted for robbery, burglary, sexual assault and possession of firearms.

Robbery



Violence is an ongoing concern at Leeds District due to the resurgence of Night Time Economy. Newcastle Sector are undertaking a joint operation with Northumbria Police every Saturday evening to ensure a more consistent joined up approach. They are also conducting licensing enforcement to ensure that the bars/clubs/hotels are complying with their conditions and Covid-19 restrictions

Incidents involving knives had begun to rise, so the combination of using BDO's, dogs, covert and overt policing was deployed. This has helped catch offenders, prevention of further crime and has made the staff and public feel safer. Intel sharing between forces has helped officers to target known offenders during the knife deployments with some good arrests.

# Reduce volume crime – particularly in hotspot locations – through a joint problem-solving approach



## Problem Solving Plan examples:

B Division

Finsbury Park ran Op Educate in September specifically targeting drug offences, robbery, VAP and Public Order offences. This was a two week operation that linked in with Op BigWing that ran for the first week of September and targeted the same locations. In addition to this, in consultation with LU managers, Wood Green was identified as having issues in the early evening therefore this location was incorporated into patrol pattern

Sexual offences day of action 20/09/2020 – Early and Late turn NPT officers were deployed to highlight the importance of reporting unwanted sexual behaviour and the seriousness that the BTP deals with this type of offence. NPT deployed hi-vis officers for engagement but also plain clothes officers to proactively catch offenders and identify suspects from ID sought releases that have been circulated.

C Division

Joint working with GWR at Oxford started to ensure cycle racks were secure and safe as possible ready for the increase in use coming out of lockdown. They culled over 100 abandoned bikes at the station. PCSO's at Swindon/Bath have been attending Chippenham on a regular basis to conduct High Visibility patrols around the cycle racks. They have been speaking with the local force and with members of the public gathering intelligence around bike crime in the area. Officers are working closely with Home Office forces to create plans to prevent an increase in cycle crime. The NPT Sgt is on a working group in Oxford aiming to improve cycle safety and security across the whole of Oxford.

D Division

There has also been a continued focus on Graffiti, with positive detections including for cross border, European offenders. A total of 14 crimes were cleared as a result of an arrest of a Spanish national in July.

# Reduce disruption through problem-solving activity at trespass locations and early intervention with those in crisis on the railway network

TRUST and SMIS Top Locations	Incidents (Last 13 Periods)	2019/20 P01-P06	2020/21 P01-P06	Difference
Pitsea*	183	70	20	-50
Leeds	37	24	18	-6
York	29	22	14	-8
Doncaster	27	29	18	-11
Reading West	26	13	10	-3
Woking	24	27	11	-16
East Croydon	24	10	9	-1
Edinburgh Waverley	23	3	10	7
Euston	21	9	10	1
Clapham Junction	21	8	5	-3

Activity at top 10 trespass hotspots continues and joint problem solving plans are reviewed each month at Disruption steering group where NWR, BTP & other Industry partners review current performance, activity & recommendations to improve safety at locations.

8 out of 10 top locations were noted during period 5. Edinburgh Waverley and Euston are now in the top 10 Trespass Hotspot Locations nationally for P06.

*A route crime hotspot is defined as a location with 12 or more route crime events in the previous 12 months/13 railway periods (NR/L3/OPS/045/4.11). The locations in the table on the left (sorted high to low on incidents for the last 13 periods) are the top 10 trespass route crime hotspots nationally*

**Q2 police related disruption 20/21**

Primary delay:  
8,469  
-62% decrease from 19/20

Reactionary delay:  
5,568  
-79% decrease from 19/20

Total delay:  
14,037  
-71% decrease from 19/20

Shettleston was identified as problematic for CYP trespass. BTP resources were deployed at the location; Scotland Route EI negotiated with NR and secured boundary fencing improvements. Further activity included work with NR Community Engagement Manager and the Scottish Football Association to deliver safety message to youth football clubs, high-visibility BTP patrols and increased NR MOM patrols. There has since been a Significant reduction in CYP trespass at location

Decoy Level Crossing identified as problematic for level crossing disruption events. Deployment of BTP resources at location; Wales Route EI engagement with NR around requirement for CCTV installation. CCTV installed; within days, main offender identified and interviewed under caution by BTP. No further level crossing disruption events recorded at location

Doncaster identified as perennial location for trespass, pre-suicidal behaviour and fatality events. BTP Embedded Disruption Team engaged with NR, LNER, Samaritans, local council, mental health teams and VITAL around safeguarding and incident prevention. BTP negotiated engineering solution with NR and LNER which included mid-platform edge painting; further physical mitigations at location under review. Doncaster is a perennial Route Crime hot spot location; the continued activity undertaken by BTP and rail industry partners is critical in the prevention of serious injury or fatality events; long-term joint-industry activity and incident prevention strategy development is ongoing

New Walk, Leicester identified as critical location for unexplained fatalities and life-saving interventions. Deployment of BTP resources at location; Midlands Disruption Team T/Sergeant engaged with council, planning officers, NR, contractors and local police. Site is a heritage area; BTP negotiated fencing solution that satisfied both NR and local planning officers. Further action included removal of shrubbery/landscape redesign to prevent network access. no further disruption events since fencing installation

# *Protect, support and safeguard vulnerable people and those at risk of harm encountered on the railway network*

---

On 15th August 2020 a successful Passive Drugs Detection Dog Operations in conjunction with the Bristol OSU and the Thames Valley Police Stronghold Team for Oxford Town Centre. We used a mixture of high visibility uniformed officers and covert officers to help identify a number of individuals carrying drugs on the network. There was a total of 19 people stopped, 15 of who were subjected to a search and action taken for 3 individuals found in possession of Class B drugs.

---

Over the last few months particularly over the Covid-19 lockdown period Coventry has had a substantial amount of stop and searches. These have resulted in arrests of nominals involved in County Lines and gang activity. The stops have highlighted that nominals are using the railway network to facilitate their criminal behaviour.

Ongoing deter and disrupt, hi- visibility patrols at Coventry have been supported by Firearms, OSU, Dogs, DBO and County Lines team. Week of Action took place between 21/07 - 24/07. Joint working with County Lines task Force, Warwickshire and West Midlands Police at Coventry and surrounding stations. With the increased County Lines activity and high volume of uniform deployment that has been taking place it has been generating increased Serious Public Order offences and assaults but none have been connected to gang behaviour. Coventry has now taken a Business as usual approach and patrols will be ongoing at the station as a general hotspot for Violence.

---

During the latest County Lines intensification week in September, officers worked alongside Home Office forces to tackle organised drug gangs and protect vulnerable children on the rail network. Officers carried out operations from Scotland to the south coast, arresting 80 people

.....Officers also seized Class A drugs, weapons and illicit cash. Approximately 200 officers were deployed each day and operations took place at more than 100 separate locations and on many routes in between.

The week saw 69 referrals made to agencies due to vulnerability concerns (45 adults and 24 children), with six referrals made to the National Referral Mechanism in relation to exploitation concerns. More than 450 wraps of Class A drugs and £11,000 in cash were seized, and 16 weapons were removed from the railway network including 10 knives and an imitation firearm.

Officers were also accompanied on deployments by several MPs and senior railway industry stakeholders. Chief Constable Paul Crowther accompanied Kit Malthouse, Minister for Policing, and Mark Hoopward, MD for SWR, at Andover.