



BRITISH  
TRANSPORT  
POLICE

# Timeliness of Crime Recording

Supt Simon Jones

Two thick yellow diagonal lines crossing the bottom right corner of the slide.

# Introduction

---



- How does crime come into BTP
- What requirements do we have to meet
- What don't we count
- Performance
- How do we compare amongst our peers
- Future steps

# Point of Entry



- 
- Crimes are reported to BTP by a number of methods:
    1. Direct from Members of the public and staff to the FCC in Birmingham.
    2. To police officers responding to calls
    3. Via Email, text and social media.
    4. Via crime transfer – CAD – Tel call

# Requirements - 2016 NCRS Guidance

---



- **Para 3.4 - Timeliness of Recording:** Where the information obtained at the first point of contact satisfies the crime recording decision making process the expectation is that identified crimes will be recorded without delay. It is expected that such crimes will be recorded on the same day the report is received – and in any case recording must take place within 24 hours of the time the initial report was received.

# What do we count



- 
- All Notifiable crime - A **Notifiable** Offence is any offence under United Kingdom law where the police must inform the Home Office by completing a **crime** report form for statistical purposes.
  - Therefore we are not required to supply all railway offences

# Performance

---



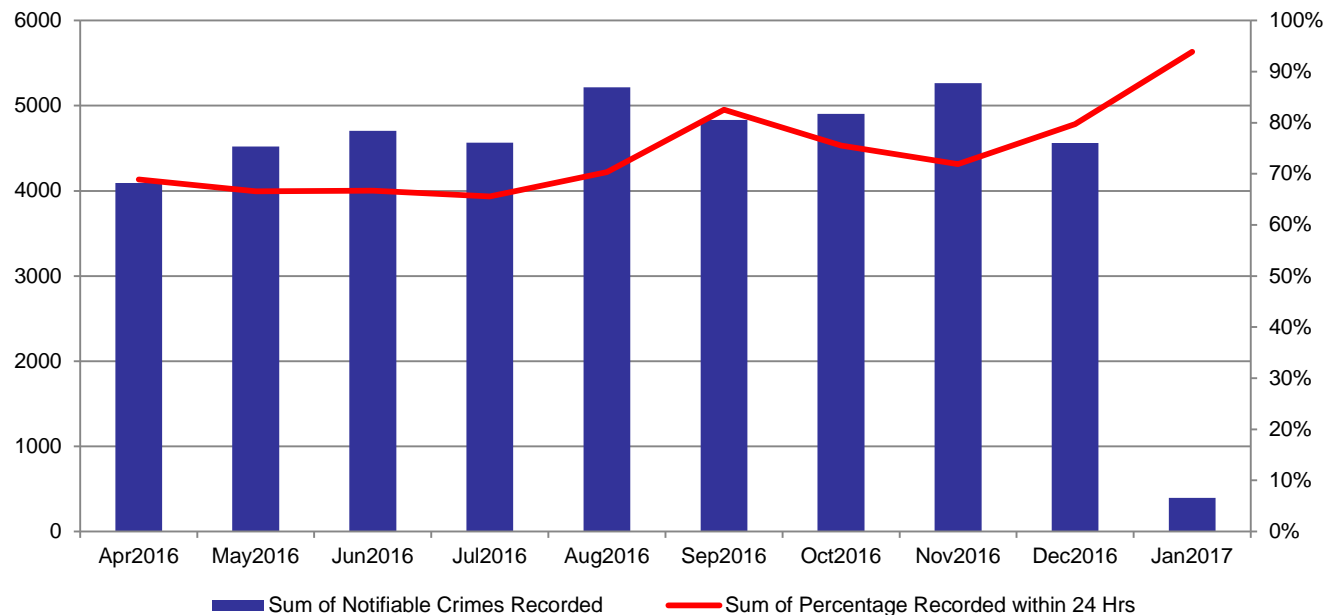
- Challenges
- Major changes to our crime and incident recording platforms.
- Training of staff both in the control rooms and police officers
- 14% less resources than nearest force
- 3% cut in resources - 5 call handlers and £172k of savings

# The journey



Recorded Date Month Year	Notifiable Crimes Recorded	Percentage Recorded within 24 Hrs	Percentage Recorded within 48 Hrs	Percentage Recorded within 72 Hrs
Jan2017	545	93.58%	95.96%	96.51%
Dec2016	4562	79.66%	85.38%	87.44%
Nov2016	5266	71.91%	76.79%	79.34%
Oct2016	4903	75.53%	79.91%	82.60%
Sep2016	4834	82.54%	88.21%	90.40%
Aug2016	5215	70.35%	74.92%	76.95%
Jul2016	4567	65.60%	70.46%	73.81%
Jun2016	4703	66.62%	74.53%	77.35%
May2016	4522	66.59%	69.64%	71.78%
Apr2016	4090	68.83%	76.87%	79.90%

## Notifiable Crime Vs. Percentage recorded within 24 Hours





# Actual Crime Recording



- 
- Whilst timeliness is one aspect of the HMIC inspection process another is actual recording.
  - Failing to recording and then record correctly can have significant implications for efficiency and more importantly confidence.

# Future steps

---



- Sussex – on line crime recording
- Mobile platform – Surrey and linear platform
- Removal of Non Notifiable non entity based crime from Niche
- Direct officer Entry
- Non Crime Occurrences - Thrive