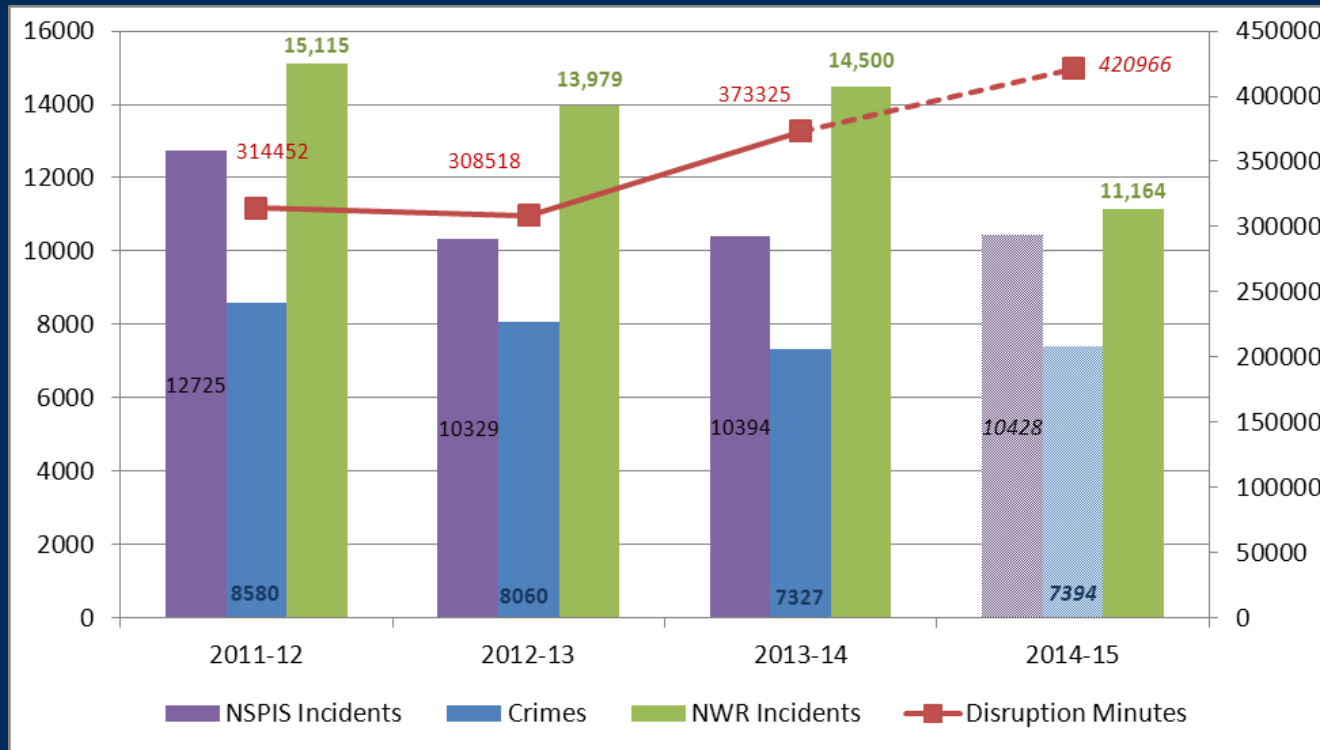


Trespass

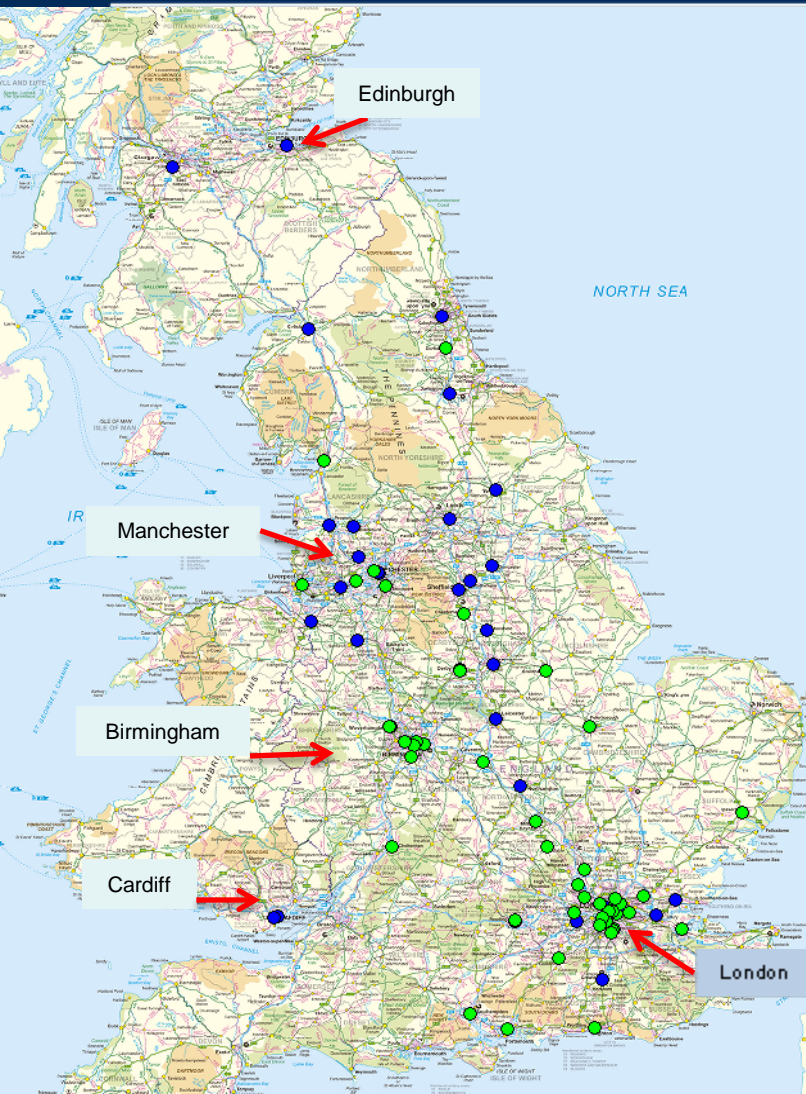
Vanita Patel
Analysis & Performance Manager - BTP

ANALYSIS

- Reduce Police/Crime related disruption by 20%
 - NWR Lost minutes are currently 8% over target
 - Trespass accounts for 48%

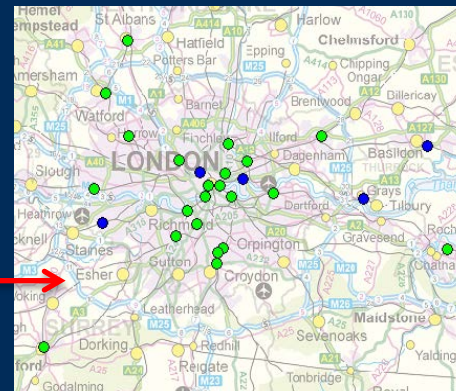


TRESPASS HOTSPOTS – BTP AND NWR



Trespass hotspots are clustered around mainline stations

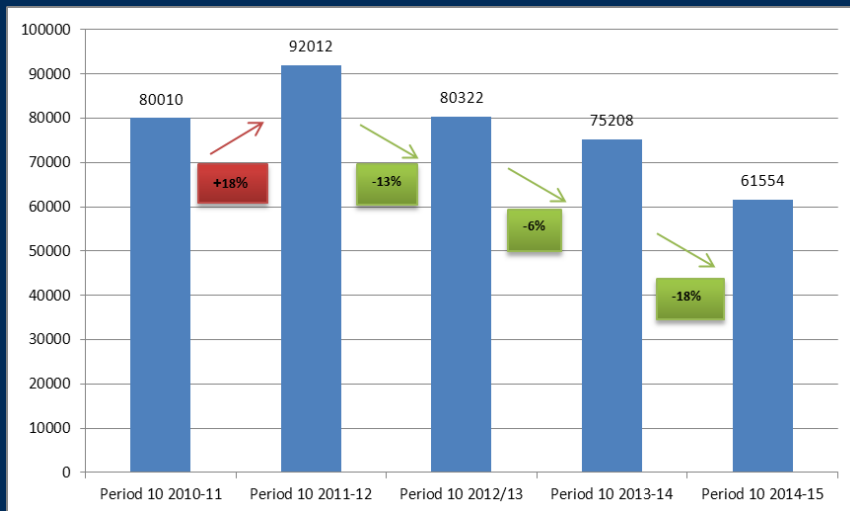
NWR and BTP hotspots follow similar patterns – some outliers



Not Protectively Marked

ANALYSIS

- Operation Intruder – 27% reduction in total police/crime related lost minutes
- Operation Decade – Joint NWR and BTP strategy

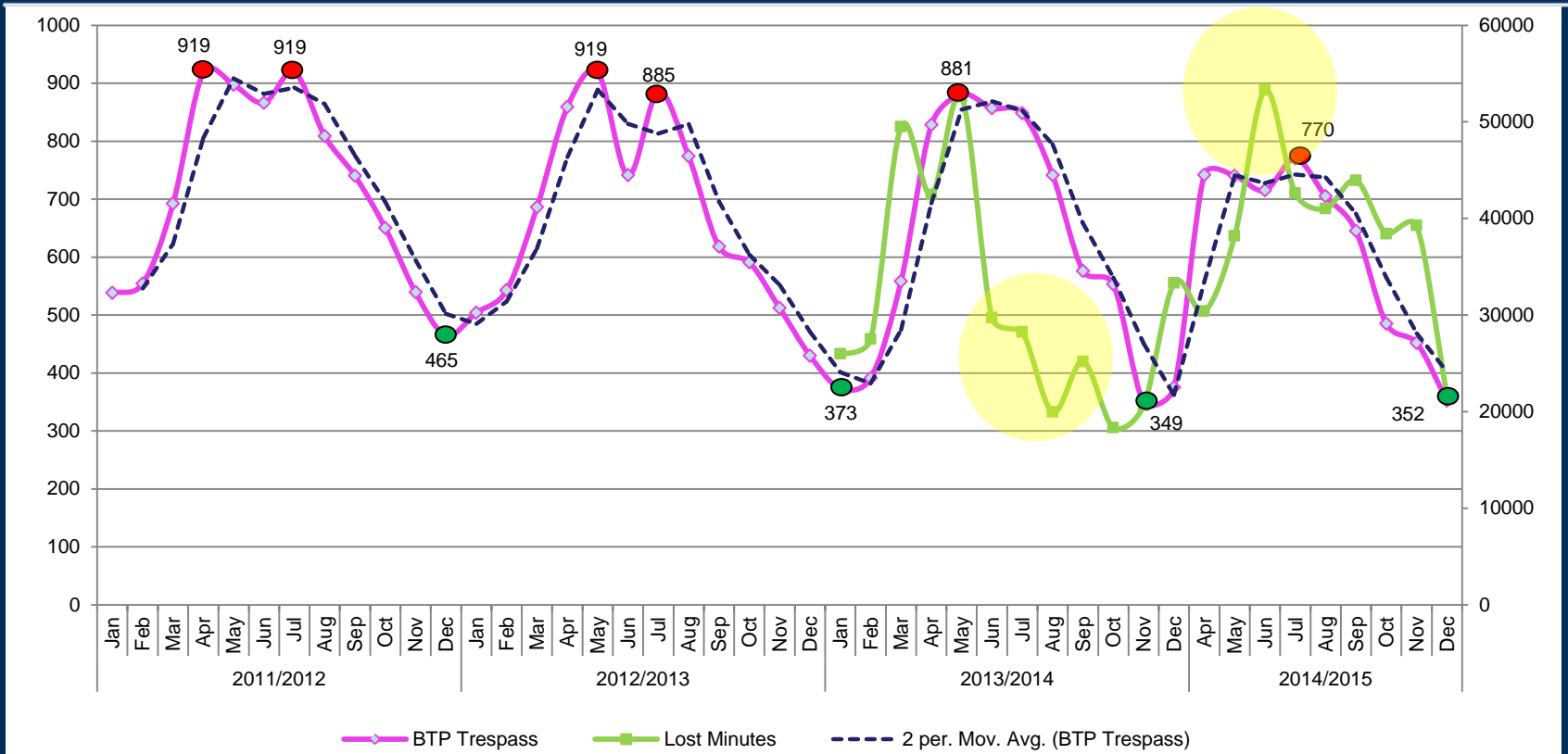


Total Police/Crime related Lost minutes



Trespass Police/Crime related Lost minutes

TRESPASS - SEASONALITY



OFFENDERS



- 30% of Trespass crime reported to BTP where persons arrested/reported
- 81% of those arrested/reported for Trespass in 2014/15 are British
- 12% Eastern European – steadily increasing in the last four years
- 88% male
- Crime – 23% arrested for trespass under 18 years
- NSPIS – 21% of incidents highlighted involving youths

Joint National Strategy – BTP and NWR

- *Working Together -* Emergency Intervention Units
Stakeholder mapping (including Inspectors and Crime reduction)
- *Intelligence* Shared access to both Industry systems
Fusion Disruption Team
Joint Performance Management framework
Shared Technology
- *Trespass* Safeguarding (including school liaison)
Active use of Drones and helicopters
Technology (including CCTV)
Mobile safety vehicles
Target hardening and designing out the problem
Offender Management
- *Incident Management* Joint Policy and Guidance
Linked Command and Control (Cadre, Force Control rooms and NWR Regional Control rooms)

BENEFITS



- Valuable and richer intelligence / analytical picture to aid better understanding of trespass
- Jointly owned operating model with joint measures and benefits
- Enhanced operational capabilities
- Greater use of advanced technology
- Deter recidivist offenders
- Build a secure railway network