

Report to: Performance Review Committee (PRC)
Agenda item:
Date: 16 January 2015
Subject: 2014-15 Performance Report, Quarter 3
Sponsor: Deputy Chief Constable
Author: Lara Adamson and Stavros Charidemou

1. INTRODUCTION

- 1.1 This paper informs the PRC's review of British Transport Police's (BTP's) performance against its strategic objectives and 2014-15 Policing Plan targets for Quarter 3 (Q3).
- 1.2 The structure of the Paper reflects BTPA's four strategic priorities as set out in the 2013-2019 Strategic Plan. Within this structure, the Paper covers BTP's eight 2014-15 National Targets, selected Local Targets and specific issues raised by the BTPA Executive, including Primary and Reactionary Lost Minutes (LMs), Theft of Passenger Property (ToPP), Violence Against the Person (VAP), Sexual offences and Local Targets on Lost Customer Hours (LCHs).

This quarter, the BTPA Executive has also requested sections on Project Guardian, disruption minutes related to trespass and a breakdown of recorded crime by Train Operating Company (TOC).

- 1.3 The Paper has four Appendices:
- Appendix A Q3 Performance Dashboard, attached as a separate document
 - Appendix B Q3 Policing Plan Executive Summary (PPES), attached as separately
 - Appendix C Q3 Force Crime Group (FCG) data, attached as a separate document
 - Appendix D Recorded offences by TOC, at the end of this paper.



2. KEY POINT SUMMARIES

2.1 Reducing Disruption

- Police related disruption minutes year to date are 3% more than last year. This means BTP are now 9% over target
- Cable theft continues to show improvement, 30% decrease compared to last year
- Vandalism disruption minutes also continued to fall in Q3
- Fatalities/injuries have seen the first reduction since start of the year, falling 2%
- Level crossing misuse has seen a slight increase, up 1% on last year
- Trespass during 2014-15 has accounted for the most minutes meaning BTP are now 15% above the same period last year
- Projecting to end of year, BTP are expecting to be 57,830 minutes (5%) over target
- To reach the 2018-19 objective, BTP needs to achieve a 28% reduction over the next four years
- Section 3 contains further details

2.2 Reducing Crime

- BTP is currently 1,233 (3%) less than this time last year
- D Division is currently 2% over this time last year, seen across three areas; violence against the person (VAP), sexual & cycle crime
- ToPP offences YTD are 14% less than during the same period last year
- Crime groups that are still increasing; violence against the person (VAP), sexual, and criminal damage
- Projecting to end of 2014-15 BTP is expected to achieve target
- Section 4 has further details



2.3 **Passenger Confidence**

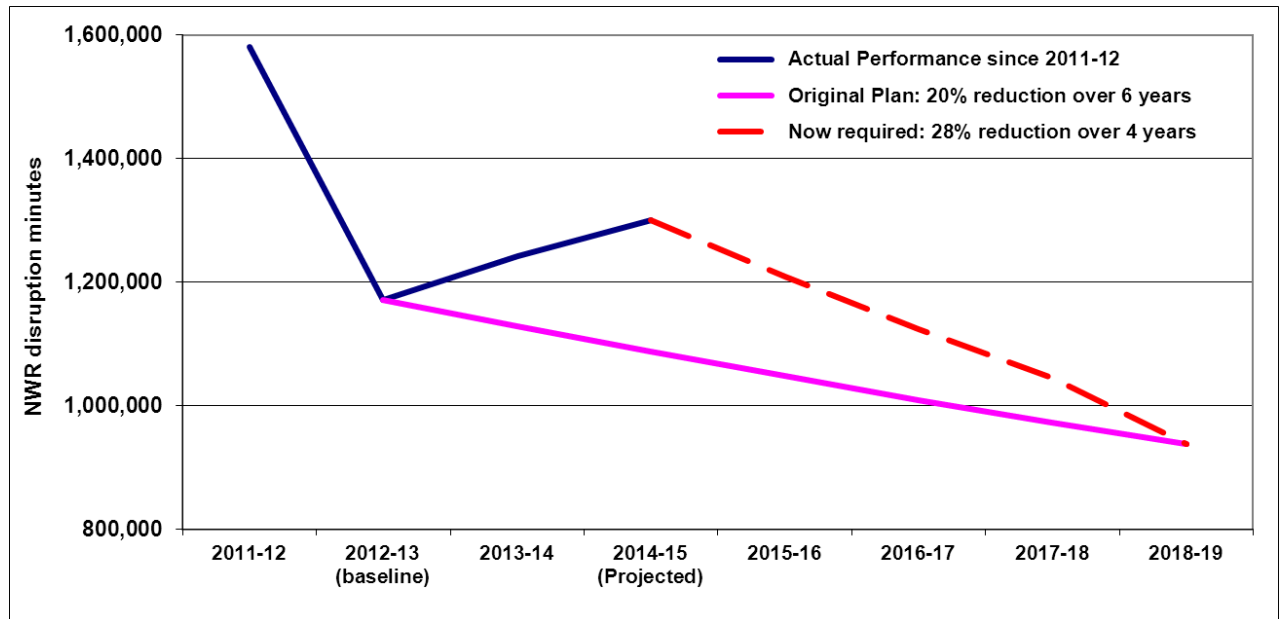
- No new National Passenger Survey findings have become available since the previous PRC meeting. The next results are due to be released in January 2015
- Passengers' 76.4% rating for their personal security in Spring 2014 survey is on track for achieving BTP's strategic objective: 82.72% in the Spring 2019 survey
- Section 7 contains further details

2.4 **Value for Money**

- BTP's fourth strategic objective is achieve the other three with annual cost increases within RPI
- BTP's Medium Term Financial Plan (MTFP) is designed to achieve this objective. Expenditure for the first six financial periods of 2014-15 is in line with its MTFP
- Section 8 has further details

3. Performance against targets - Disruption

Chart 1 Progress towards Strategic Objective to Reduce Disruption by 20%



3.1 Three of BTP's National Targets support its objective to reduce disruption:

- N2 Reduce police related disruption minutes by 6%
- N4 Average fatality clearance time for to be less than 90 minutes
- N5 Average time for partial re-opening of multi-track lines to be less than 45 minutes

N2 Reduce the number of police related disruption minutes

3.2 During Q3 disruption minutes have seen a reduction of 13% compared against Q2, but this has not been enough to bring it back to target levels. As a result, NWR recorded 984,758 police related disruption minutes year to date (YTD), 25,778 (3%) more than last year. This means BTP are now 9% over target. Projecting to end of year, BTP are expecting to be 57,830 minutes (5%) over target. To reach the 2018-19 objective, BTP needs to achieve a 28% reduction over the next four years.

3.3 C and D Divisions are currently achieving their targets; with B Division 18% (75,462 minutes) over target from both East & South sub-divisions.

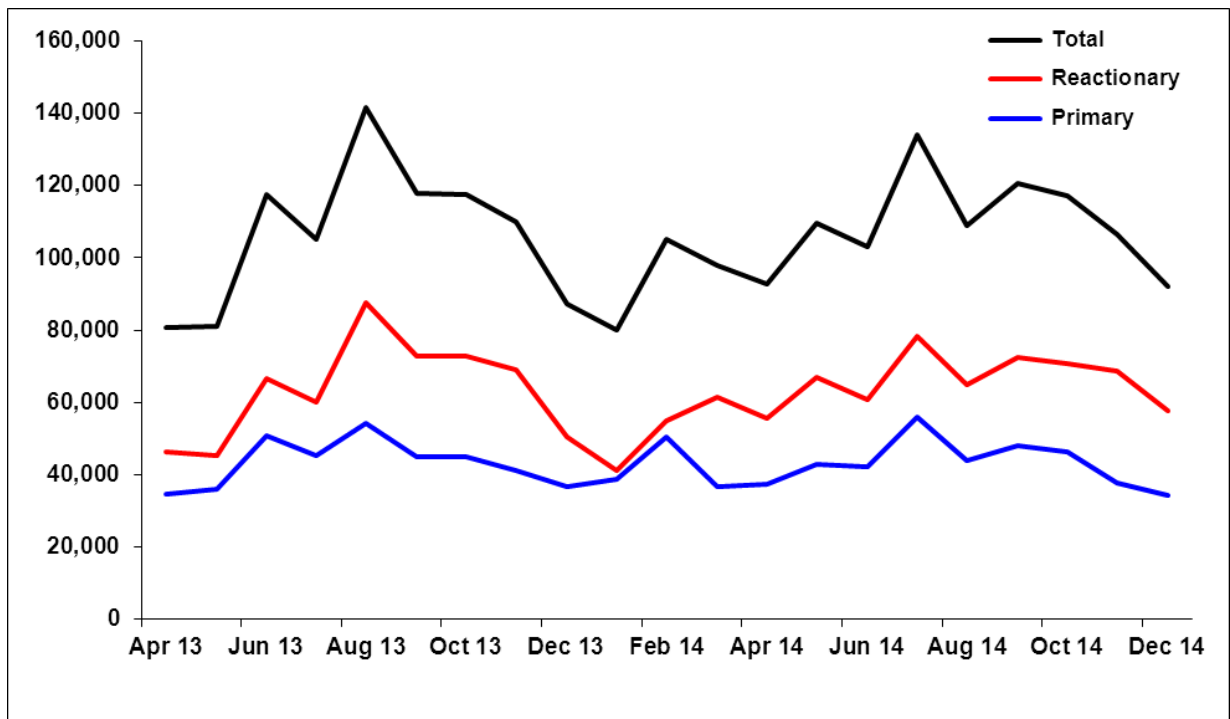
3.4 To date there have been twelve incidents over 5,000 disruption minutes long, 10 of which have occurred on B Division, evenly split between East & South.

- 3.5 Three of these have been during Q3, including a suicidal trespasser at Clapham Junction in morning rush hour which caused 7,400 minutes.
- 3.6 **Cable theft** continues to show the greatest improvement. The rate of cable disruption minutes has fallen 30% compared to this time last year. This is consistent with the reduction in live cable theft offences: down 93 offences on 2013-14 YTD. As a result of BTP's success at reducing cable theft, cable incidents are now causing fewer disruption minutes than any other reason category.
- 3.7 **Vandalism** disruption minutes have also continued to fall in Q3. YTD compared to last year they are down 14%, which is projected to continue to the end of 2014-15.
- 3.8 **Fatalities/injuries** have seen the first reduction since the start of the year, falling 2% compared to last year. If this continues in Q4, as projected, BTP are likely to see a 3% decrease on 2013-14 disruption minutes.
- 3.9 **Level crossing misuse** has seen a slight increase in Q3, meaning that BTP are now 1% up on last year. This increase is likely to continue to the end of 2014-15.
- 3.10 **Trespass** is the only police related category to have increased significantly since 2011-12. During 2014-15 YTD, trespass has accounted for the most minutes with 48% of the police related total. NWR has recorded 471,519 minutes; 61,557 (15%) above the same period last year.

Primary and reactionary disruption minutes

- 3.11 Chart 2 below shows the primary / reactionary breakdown over the last two years and a close correlation between the two types of disruption can be clearly seen. BTP initiatives to reduce disruption minutes directly impact on primary and chart two suggests the impact on reactionary is nearly as great, even if contact is indirect.

Chart 2 Total disruption, primary & reactionary



3.12 Over the last four years, primary and reactionary minutes have followed similar trends, but reactionary minutes have been gradually increasing each year. This trend has continued in 2014-15, with reactionary minutes 4% higher than 2013-14, to date.

N4 Fatality clearance

3.13 BTP continues to achieve its 90 minute fatality clearance target. During Q3 it achieved an average clearance time of 77 minutes. All sub-divisions except Western are achieving target. Western's 95 minutes YTD is due to three unexplained fatalities occurring in Q3 with a combined clearance time of 423 minutes.

N5 Fatality clearance on multi-track lines

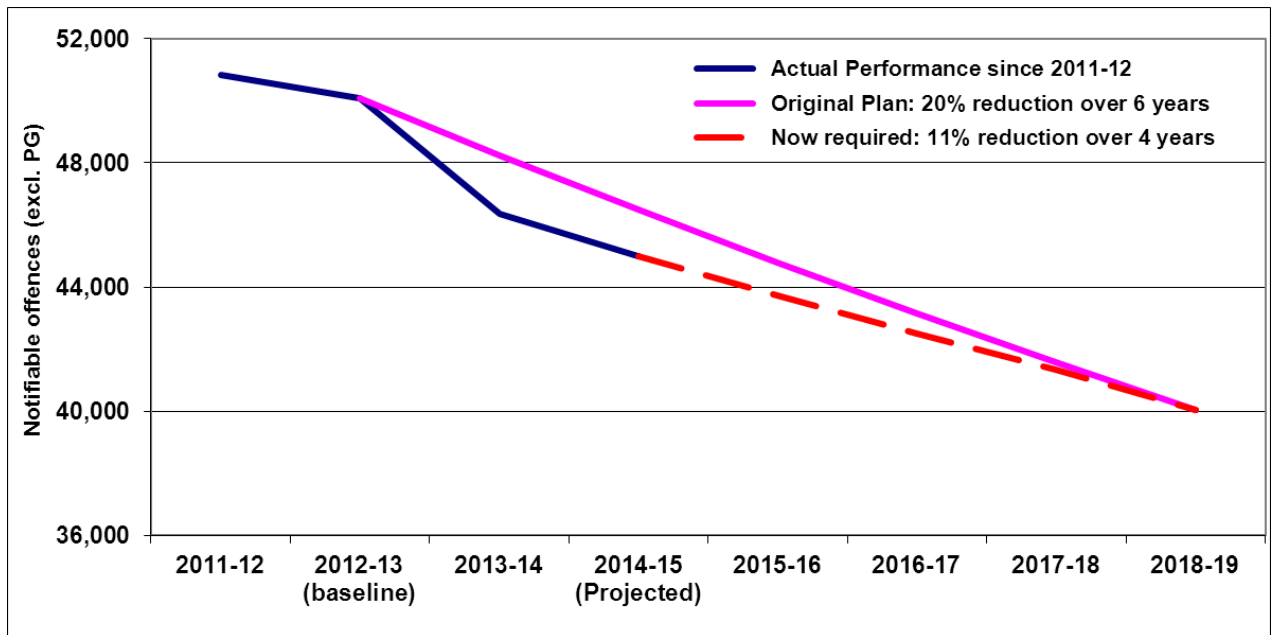
3.14 A national target for 2014-15 is to open one track of multi-track lines within 45 minutes. BTP is currently achieving an average of 43 minutes.

Between April and December 48 fatality incidents were on multi-track lines; 39 in B Division, nine in C Division & none in D Division. B-Division is currently achieving target at 39 minutes per incident. C Division is over target at 63 minutes, with all Sub-divisions over

target. The main reason for this is the low number of incidents occurring on C Division & therefore their lack of practice in this area.

4. Performance against targets - Reduce crime & make the railway safer

Chart 3 Progress towards Strategic Objective to Reduce Notifiable Crime by 20%



N1 Reduce notifiable crime (excluding police generated)

4.1 So far this year BTP have recorded 34,121 notifiable offences, excluding police generated. This is 1,233 (3%) less than this time last year. Projecting to the end of 2014-15 BTP is expected to achieve target.

4.2 B and C Division are currently achieving target; with D Division only 2% over this time last year. D Division have seen an increase across three areas; violence against the person (VAP), sexual & cycle crime. For VAP offences, assaults have seen the main increase, particularly Common assault; 28% up on last year.

4.3 Sexual offences are up 45% on this time last year, however with the small numbers seen in Scotland this equates to 13 offences. Although Forcwide cycle crime has seen a decrease in Q3, D Division offences were up 50 (106%) on this time last year with 37 offences occurring in Q3. This is a 59% increase on Q3 in 2013-14.



4.4 Table 1 shows the daily crime rates for each notifiable crime group with the final column showing what the daily target would be if the overall 4% reduction target was applied equally to each type of crime. This shows that although the crime rate has fallen steadily over the past three years, there are significant differences between the crime groups.

4.5 **ToPP** accounts for 26% of BTP's notifiable offences and is critical to the achievement of the notifiable crime reduction target. Table 1 shows that ToPP rates have fallen steadily since 2010-11. This improvement is continuing in 2014-15: the 9,463 offences YTD are 1,522 (14%) less than during the same period last year.

Table 1: Notifiable crime groups, offences per day

	Full years				2013-14, by Quarter				2014-15			2014-15 Target *
	10-11	11-12	12-13	13-14	Q1	Q2	Q3	Q4	Q1	Q2	Q3	
VAP	22.4	21.6	22.3	23.1	22.2	22.2	22.5	25.5	24.3	24.5	25.8	22.2
Sexual	2.6	2.8	2.5	3.1	2.6	3.5	3.0	3.1	3.7	4.4	3.5	2.9
Criminal Damage	13.7	10.7	9.5	9.0	8.9	8.3	8.6	10.4	9.6	7.8	9.8	8.7
Serious Line of Route	4.1	3.8	3.3	3.1	4.2	3.7	2.2	2.6	3.8	3.2	2.7	3.0
ToPP	45.6	40.5	47.4	39.3	42.0	42.1	37.6	35.5	34.7	33.5	35.0	37.8
Vehicle / cycle crime	22.1	23.8	20.4	20.4	20.1	26.2	19.7	15.7	20.2	24.7	19.1	19.6
Robbery	1.9	1.8	1.5	1.2	1.4	1.2	1.2	1.0	1.1	0.9	1.0	1.1
Theft Rly/Comm Prop.	18.7	16.3	13.2	12.1	12.5	12.9	11.1	11.8	12.1	10.5	10.9	11.6
Ser. Public Disorder	17.6	13.8	13.1	13.1	13.5	13.0	12.8	13.0	12.8	12.7	12.6	12.6
Serious Fraud	2.7	2.4	2.5	1.3	2.0	1.3	0.7	1.0	1.3	0.8	1.0	1.2
Drug offences	11.8	10.0	9.5	10.9	11.3	10.3	10.7	11.6	7.9	6.1	5.8	10.5
Other Notifiable	2.3	2.3	2.6	2.7	2.7	2.5	2.7	2.8	2.4	2.4	2.1	2.6
Total Notifiable	165.6	149.9	147.6	139.3	143.3	147.2	132.7	133.9	133.8	131.4	129.4	133.7
Selected subsets												
Notifiable, excl. PG	152.5	139.1	137.2	127.4	131.1	135.9	121.2	121.4	125.0	124.4	122.8	122.3
Live cable	3.8	3.1	1.3	0.8	0.9	1.0	0.8	0.6	0.6	0.4	0.6	0.8
Non-live cable	3.7	3.4	2.1	1.4	1.7	1.4	1.2	1.1	0.8	0.7	0.8	1.3
Cycle crime	16.0	18.4	15.8	16.4	15.8	22.0	16.1	11.7	16.2	20.3	15.1	15.8
Motor crime	6.1	5.4	4.5	4.0	4.2	4.2	3.6	4.0	3.9	4.3	4.0	3.8

* The "targets" for individual crime groups are indicative only; they assume the 4% overall reduction target applies equally to each group.

4.6 The only crime groups still increasing are violence against the person (VAP), sexual, mainly due to Project Guardian, and criminal damage. In comparison with the last year, criminal damage offences have increased 5%; 127 offences. The largest percentage increases have been in Midlands (22%), South (16%), East (8%) & Wales (7%). The majority of the Q3 increase has been in graffiti offences, up 36% since Q2.

Local Targets to reduce crime

- 4.7 At the end of Q3, all sub-divisions were achieving their targets.
- 4.8 There is also a focus on reducing violence towards rail staff; Scotland is the only sub-division without a target. East has recorded 57 offences (17%) over target & South is over by 18 offences; 3%. In both sub-divisions common assaults, assault occasioning ABH & fear or provocation of violence have seen the main increases. This is mainly located at the major hub stations (Kings Cross, Liverpool Street, Victoria, Charing Cross & Watford Junction) late at night on Friday & Saturday. Detections rates however have improved for East sub-division, up 5% from 44% to 49%. Sub-division South has remained unchanged at 40%.

5. SEXUAL OFFENCES

- 5.1 Comparing year to date figures, there has been an increase in recorded sexual offences, Forcewide, up 25% on last year. This has been seen on both East and South sub-divisions; East has seen a 33% increase and South 6%. This would suggest Op Guardian is achieving its aim of increasing confidence in victims to come forward.

Table 2: Sexual offences - crime & detection rates from 1 April 2014 to 31 December 2014

Sub Division	Sexual Offences								
	Rec 13/14	Rec 14/15	% Diff	Det 13/14	Det 14/15	% Diff	Det Rate 13/14	Det Rate 14/15	Diff
East	120	160	33%	45	56	24%	38%	35%	-3%
South	191	203	6%	65	54	-17%	34%	27%	-7%
TfL	319	434	36%	104	135	30%	33%	31%	-1%
Midlands	54	53	-2%	15	17	13%	28%	32%	4%
Pennine	95	118	24%	42	54	29%	44%	46%	2%
Wales	14	13	-7%	5	7	40%	36%	54%	18%
Western	27	41	52%	7	24	243%	26%	59%	33%
Scotland	29	42	45%	18	23	28%	62%	55%	-7%
Total	849	1064	25%	301	370	23%	35%	35%	-1%



5.2 Year to date detection rates have fallen slightly with the East dropping from 38% to 35% and the South from 34% to 27%. It is important to note that due to the relatively small numbers (Table 2), greater variance in percentage change is likely to occur.

5.3 Drilling down further into East and South data, the two most common sexual offences committed since Op Guardian launched are ‘sexual assaults on female aged 13 or over’ (40.2%) and ‘committing an act outraging public decency’ (41.3%). Reading through the crime comments, groping and exposure featured heavily and still account for most sexual offences. Serious sexual offences such as rape still remain low with a total of 7 crimes across the East and 8 across the South since op Guardian commenced. Summer months of Jun/Jul/Aug saw a peak in sexual offences committed in both 2013/14 and 2014/15.

6. VIOLENCE AGAINST THE PERSON

6.1 Common assaults accounted for 45% of all violent offences in Q3 across the entire force.

6.2 On D Division, 20% of all offences were alcohol related. Other sub-divisions ranged between 9%-15%.

Table 3: Victim Categorisation for Q3

	Scotland	East	Western	Midlands	Pennine	South	TfL	Wales
Passenger	66	240	25	82	231	333	376	46
Staff	24	139	17	59	64	179	162	26
Police Officer	14	54	2	18	27	38	41	4
PCSO	0	1	0	3	1	0	3	1
TOTAL	104	434	44	162	323	550	582	77

6.3 Victim categorisation is broken down in table 3 by sub-division. As evidenced in the table above, sub-division Pennine seem to have a higher proportion of violent offences involving passengers than all other sub-divisions.

6.4 Further analysis into staff victimisation showed that common assault was the highest crime type across all sub-divisions. This was then followed by ‘Assault occasioning actual bodily harm’ and ‘Racially or religiously aggravated - harassment, alarm or distress’.

6.5 Violent offences followed a trend of peaking over Friday and Saturday which is in line with night time economy. Following the announcement that TfL services will be operating 24/7 from September 2015, there is a heightened concern that violent offences will increase.

This is due to the increased number of intoxicated commuters using the services to get home in the early hours.

- 6.6 Interestingly the month of November witnessed the highest number of recorded violent offences for Quarter 3. Drilling down into November, the majority of VAP was common assault across all sub divisions. Of these, around 20% involved ticket or barrier disputes compared to 17% across all crime categories in VAP.

7. Performance against targets - Promote passenger confidence on the railway

- 7.1 Two National Targets support the strategic objective: improving passengers' personal security ratings (N6) and rail staff's (N8).

N6 Passengers' ratings for their personal security

- 7.2 NPS surveys are undertaken by Passenger Focus in spring and autumn. Field Research for the autumn 2014 survey is currently underway; results due in January.
- 7.3 The most recent survey results, from spring 2014, were issued in June and included in Q1 PRC Performance Report. As no new findings have become available, Table 4 is a duplicate included in Q1 report.

Table 4 Percentage of NPS respondents giving a "Fairly Good" or "Very Good" rating for their personal security

	Spring 2012	Autumn 2012	Spring 2013	Autumn 2013	Spring 2014	Autumn 2014	Spring 2015	Spring 2019
On stations	69.5%	73.6%	67.3%	72.4%	73.5%			
On board trains	79.2%	80.5%	83.6%	79.6%	79.6%			
On stations and trains	74.5%	77.1%	75.2%	76.1%	76.6%			
Policing Plan Target				Baseline	76.4%	77.0%	77.5%	
Strategic Objective				survey				82.72%

Note: the "On station and train" average is weighted by the number of responses to each question.

7.4 Divisions are making plans now on how they can influence confidence in time for the next wave of the survey, due to start in March 2015. Short term responses for the next survey include an active use of social media and communications at low level confidence stations as well as maintaining high levels of confidence at major stations.

N8 66.4% of rail staff to rate their personal security at work “Good” or “Very good”

7.5 This highlights BTP’s commitment to protect rail staff as well as passengers. It is based on responses to a new survey, organised by BTP, but dependent on TOCs for the distribution of questionnaires to their employees.

7.6 The survey will be annual, in March/April. The first survey was conducted in 2014; there were 1,577 responses from rail staff, employed by 21 TOCs. 65.1% of respondents rated their personal security at work “Good” or “Very good”.

7.7 BTP is now engaging with TOCs and Industry on how to further improve rail staff’s confidence with initiatives such as localised engagement, focus groups and working with TOCs to improve both the working environment and staff training in conflict management and personal security.

8. Performance against targets – Delivering value for money

8.1. Two of the National Targets support this strategic objective: N3, to have less than 7.3 days sickness per employee and N7, to spend 58% of revenue on frontline resources.

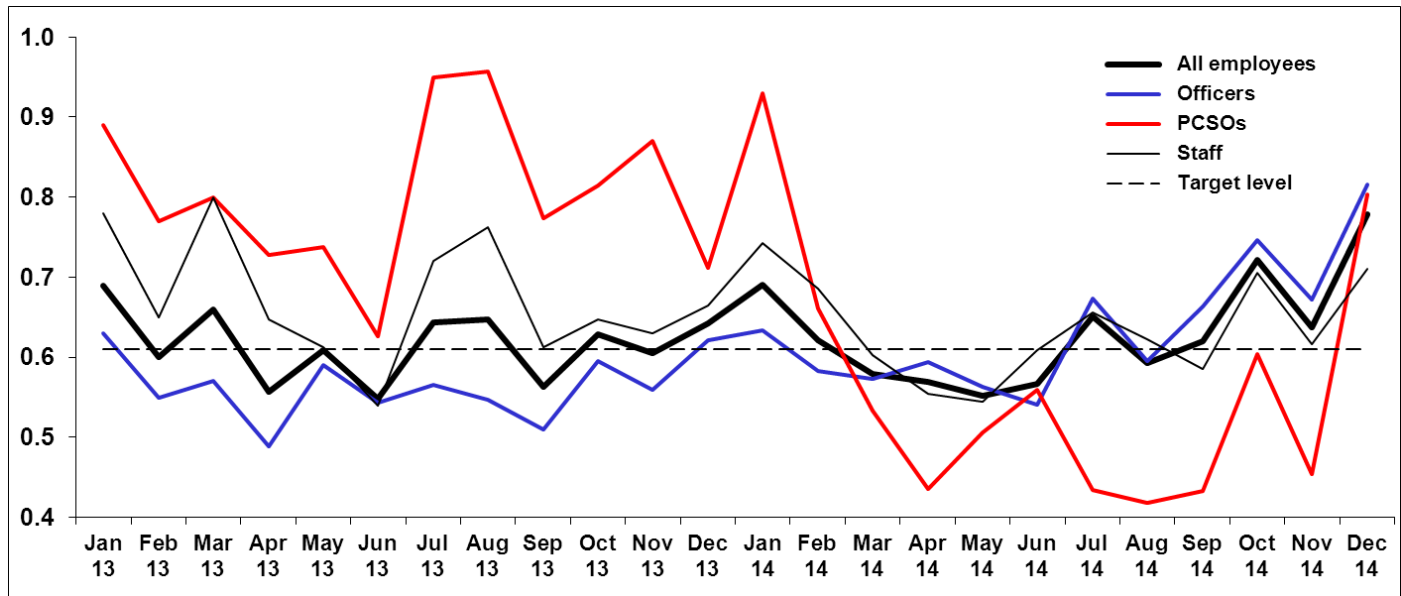
N3 2014-15 Level of sickness to be less than 7.3 days per employee

8.2. At the end of Q3 BTP’s overall sickness rate was 5.69 days per employee, over the current target of 5.48.

8.3. Unusually in 2014-15 PCSOs have had the lowest sickness rate with officers at the highest (chart 4). Chart 4 also shows that sickness rates rose again in Q3, 15% above Q2 levels. This trend needs to be reversed if BTP is to achieve its annual sickness target. However taking into account previous years data, Q4 is normally the highest quarter for the year.



Chart 4 Sickness days per employee per month, by employee group



8.4. 75% of sickness instances YTD have been long-term; this has steadily been increasing since March. Short-term sickness had been falling, but in Q3 it has seen a rise, which is expected in late autumn.

N7 Spend 67% of the Revenue Budget on frontline resources

8.5. BTP's 2014-15 target is to increase the percentage of its revenue budget spent on frontline resources, from the 2013-14 level of 65% to 67%.

8.6. With Period 6 financial data, BTP's latest estimate of out-turn expenditure for 2014-15 is £278,231. This includes expenditure of £189,297 on frontline resources, 68% of the total, exceeding BTP's target by one percentage point.

9. CRIME BY TOC

9.1 NWR accounts for 19% of the notifiable offences and 41% of the non-notifiable. NWR offences occur on the railway infrastructure or at one of NWR's 19 stations.

Agenda item 3, Appendix A 2014-15 Performance Dashboard, Q3

N/A : not applicable	2014-15 Q3 performance	↑ : improving
n/av: not available	compared with 2014-15	↓ : not as good
YTD: year to date	Q2 performance:	← : similar

2014-15 Policing Plan targets		
	No. of targets	Achieving
National *	7	5
Local	68	41

* Figures exclude Target N8 (rail staff security) which survey. Performance data will not be available until

2010-11	2011-12	2012-13	2013-14	2013-14 Quarter 3	2014-15 Quarter 2	2014-15 Quarter 3	Direction	2014-15 Annual Target	2014-15 YTD target	2014-15 YTD performance
---------	---------	---------	---------	----------------------	----------------------	----------------------	-----------	--------------------------	-----------------------	----------------------------

Disruption: Reducing disruption to help keep the railway running

NWR police related Disruption Minutes	1,406,625	1,580,474	1,171,730	1,242,171	314,846	364,036	318,114	↑	1,167,640	958,980	984,758
NWR Disruption Minutes due to trespass	459,267	448,696	435,523	512,697	137,340	166,369	147,726	↑	N/A		
NWR Disruption Minutes due to fatalities or injuries caused by being hit by a train	318,717	492,417	387,521	472,655	135,236	150,829	95,467	↑	N/A		
Live cable offences	1369	1120	491	293	70	38	55	↓	N/A		
Average time to clear non-suspicious and unexplained fatalities (minutes)	81	76	76	76	70	78	77	↑	90	90	80
Average time to clear one track at multi-track fatalities (minutes)	n/av	n/av	n/av	n/av	n/av	34	52	↓	45	45	43

Protect: Reducing crime to make the railway safer & more secure

Notifiable offences, excluding police generated	55,680	50,925	50,081	46,508	12,167	11,449	11,296	↑	44,648	35,354	34121
Detection rate for notifiable offences including police generated	32%	32%	31%	34%	34%	30%	32%	↑	N/A		
Theft of Passenger Property offences	16,648	14,841	17,292	14,353	3,459	3,078	3,224	↓	N/A		
Violence Against the Person offences	8,140	7,912	8,117	8,425	2,067	2,252	2,378	↓	N/A		
Cycle Crime	5,854	6,746	5,779	5,993	1,479	1,872	1,387	↑	N/A		
Conviction Rate, Crown Courts	81%	82%	79%	81%	83%	82%	81%**	↓	N/A		
Conviction Rate, Magistrates Courts	84%	84%	87%	86%	85%	83%	83%**	←	N/A		

** October-November only (December data not yet available from CPS)

Serve: Promoting confidence in the use of the railway

Victim of Crime Survey, Overall Satisfaction rating	86%	84%	85%	85%	85%	82%	n/av	↓	N/A		
NPS: % giving "Good" or "Satisfied" rating for personal security on board trains and at stations.	73.5%	74.6%	76.2%	76.4%	NPS surveys are in Spring & Autumn. Results due June & Jan.				77.5%	76.4%	76.6%
Rail staff survey: % of respondents rating their personal security at work "Good" or "Very good"	n/av	n/av	n/av	65.1%	Rail staff survey is annual in March. 65.1% baseline is from March 2014 survey. Next survey will be in 2015.				66.4%		n/av

Finance: delivering value for money

% of budget spent on Frontline resources (revised definition for 2014-15)	n/av	n/av	n/av	65%	n/av	68%	n/av	↑	67%	67%	68%
Sickness absence (days per employee)	7.68	7.40	7.50	7.34	1.90	1.86	2.14	↓	7.30	5.48	5.69

Agenda item 3, Appendix A 2014-15 Performance Dashboard, Q3

N/A : not applicable	2014-15 Q3 performance compared with 2014-15 Q2 performance:	↑ : improving ↓ : not as good ← : similar
n/av: not available		
YTD: year to date		

2014-15 Policing Plan targets		
	No. of targets	Achieving
National *	7	5
Local	68	41

* Figures exclude Target N8 (rail staff security) which survey. Performance data will not be available un

	2014-15 Quarter 1	2014-15 Quarter 2	2014-15 Quarter 3	Direction	2014-15 Annual Target	2014-15 YTD target	2014-15 YTD performance
B Division, East							
Theft of Passenger Property offences	606	589	653	↓	2,398	1,806	1,848
Aggression & violence against staff	122	136	125	↑	476	358	383
Cycle crime	358	501	335	↑	1,507	1,135	1,194
Level crossing PSPs	0	0	5	↑	20	15	5
Detection rate for violent crime	46%	51%	63%	↑	48%	48%	54%
Escorted football trains	7	47	93	↑	312	235	147
Football banning orders	86%	100%	100%	←	92%	92%	94%
B Division, South							
Theft of Passenger Property offences	616	627	584	↑	2,480	1,868	1,827
Aggression & violence against staff	173	193	176	↑	720	542	542
Cycle crime	601	755	546	↑	2,364	1,781	1,902
Level crossing PSPs	0	0	20	↑	20	15	20
Detection rate for violent crime	46%	53%	49%	↓	42%	42%	49%
B Division, TFL							
Theft of Passenger Property offences	943	1,005	1,202	↓	4,592	3,459	3,150
Detections for sexual offences	46	57	34	↓	149	111	137
Aggression & violence against staff	92	97	123	↓	416	313	312
Skimming offences	7	16	5	↑	31	23	28
Lost customer hours	192,715	322,461	438,543	↓	1,503,666	1,132,899	953,719
Joint Operations	32	31	28	↓	120	90	91
Detection rate for violent crime	39%	32%	27%	↓	34%	34%	32%
C Division, Midlands							
Theft of Passenger Property offences	192	201	209	↓	822	619	602
Aggression & violence against staff	93	74	83	↓	316	238	250
Detection rate for staff assaults	62%	62%	46%	↓	55%	55%	56%
NWR Disruption Minutes due to fatalities or injuries caused by being hit by a train	11,164	17,208	11,159	↑	86,523	65,188	39,531
NWR Disruption Minutes due to level crossings	995	2,131	7,259	↓	7,200	5,424	10,385
NWR Disruption Minutes due to trespass and vandalism/theft	32,228	28,764	27,630	↑	107,881	81,280	88,622
Cable offences	13	11	26	↓	181%	136	50
Immediate incidents	92%	92%	92%	←	92%	92%	92%
Priority incidents	99%	99%	99%	←	99%	99%	99%
ASB, crime, football & freight PSPs	0	3	3	←	6	4	6
C Division, Pennine							
Theft of Passenger Property offences	389	373	386	↓	1,454	1,095	1,148
Aggression & violence against staff	151	137	139	↓	571	430	427
Detection rate for staff assaults	43%	60%	65%	↑	58%	58%	55%
NWR Disruption Minutes due to fatalities or injuries caused by being hit by a train	8,814	23,997	12,135	↑	52,136	39,280	44,946
NWR Disruption Minutes due to level crossings	3,560	3,564	6,391	↓	14,178	10,682	13,515
NWR Disruption Minutes due to trespass and vandalism/theft	44,119	48,864	46,785	↑	141,025	106,251	139,768
Cable offences	55	34	49	↓	283	213	138
Immediate incidents	92%	92%	92%	←	92%	92%	92%
Priority incidents	99%	99%	99%	←	99%	99%	99%
ASB, crime, football & freight PSPs	0	3	3	←	10	7	6
C Division, Wales							
Theft of Passenger Property offences	53	69	48	↑	226	170	170
Aggression & violence against staff	28	23	33	↓	104	78	84
Detection rate for staff assaults	67%	75%	28%	↓	60%	60%	49%
NWR Disruption Minutes due to fatalities or injuries caused by being hit by a train	2,596	6,164	1,308	↓	7,487	5,640	10,068
NWR Disruption Minutes due to level crossings	379	714	1,011	↓	3,878	2,921	2,104
NWR Disruption Minutes due to trespass and vandalism/theft	6,586	7,709	6,087	↓	28,732	21,647	20,382
Cable offences	11	34	49	↓	99	74	43
Immediate incidents	87%	89%	89%	←	92%	92%	89%
Priority incidents	96%	98%	98%	←	99%	99%	98%
ASB, crime, football & freight PSPs	0	3	0	↓	5	3	3
C Division, Western							
Theft of Passenger Property offences	138	143	148	↓	676	509	429
Aggression & violence against staff	57	68	42	↑	238	179	167
Detection rate for staff assaults	76%	63%	50%	↓	64%	64%	64%
NWR Disruption Minutes due to fatalities or injuries caused by being hit by a train	3,577	4,662	9,532	↓	27,655	20,835	17,771
NWR Disruption Minutes due to level crossings	1,043	2,018	888	↑	11,323	8,531	3,949
NWR Disruption Minutes due to trespass and vandalism/theft	12,356	10,463	6,947	↑	38,436	28,958	29,766
Cable offences	6	6	1	↑	22	16	13
Immediate incidents	90%	94%	94%	←	92%	92%	94%
Priority incidents	98%	99%	98%	↓	99%	99%	98%
ASB, crime, football & freight PSPs	0	3	0	↓	5	3	3
D Division							
Theft of Passenger Property offences	69	100	80	↑	323	243	249
Disruption PSPs	55%	55%	77%	↑	75%	75%	77%
ASB PSPs	75%	97%	92%	↓	75%	75%	92%
Level crossing PSPs	75%	89%	72%	↓	75%	75%	72%
Victim of Crime Survey, Overall Satisfaction rating	86%	87%	n/av	←	92%	92%	87%
Football disorder operations	4	7	2	↓	15	11	13
Football banning orders	100%	100%	100%	←	80%	80%	100%
Response times (Commonwealth Games)	N/A	95.0%	N/A	←	95%	95%	95%
ASB incidents (Commonwealth Games)	40	50	8	↑	181	159	98

2014-15 POLICING PLAN: NATIONAL TARGETS

Updated to: 31 Dec 2014

Targets N1 & N2 updated to: 31 Dec 2014 (Last quarter to: 30 Sep 2014)

Key:

GREEN	Achieving target
AMBER	Failing target by < 5%
RED	Failing target by ≥ 5%

A Div'n	East	South	TfL	B Div'n	Midlands	Pennine	Wales	Western	C Div'n	D Div'n	BTP
---------	------	-------	-----	---------	----------	---------	-------	---------	---------	---------	-----

Number of National Targets being achieved.

Note: the figures in the table exclude Target N8 (rail staff security) because 2014-15 performance data will not be available until April 2015.

No. of National Targets	3	5	5	4	5	5	5	5	5	5	7
No. being achieved now	2	2	3	4	3	2	2	2	1	2	4
No. last month	2	2	3	4	3	4	2	3	3	2	5

Number of Local Targets being achieved

No. of Local Targets	7	5	7	19	10	10	10	10	40	9	68
No. being achieved now	2	3	6	11	7	5	4	7	23	6	40
No. last month	1	1	7	9	8	5	8	8	29	6	44

N1 Reduce the number of recorded notifiable offences (excluding police generated) by 4%

YTD Performance	6,915	8,440	6,920	22,275	3,018	5,174	867	1,541	10,600	1,246	34,121
YTD Linear Target	6,530	8,301	7,218	22,049	2,810	5,236	857	1,557	10,460	1,133	33,642
Last month performance	4,623	5,792	4,431	14,846	1,984	3,485	581	1,112	7,162	817	22,825
Last month target	4,345	5,524	4,804	14,673	1,870	3,485	570	1,036	6,961	754	22,388
Better / worse than LM	↑	↑	↓	↑	↓	↑	↑	↑	↑	↓	↑
Same period last year	6,834	8,729	7,511	23,074	2,940	5,531	899	1,688	11,058	1,222	35,354

N2 Reduce police related NWR lost minutes by 6%

YTD Performance	220,385	270,303	490,688	144,892	216,569	34,792	51,486	447,738	46,332	984,758
YTD Linear Target	170,734	223,614	394,348	176,101	172,498	33,858	59,782	442,239	43,145	879,732
Last month performance	151,484	192,200	343,684	93,982	138,797	26,214	34,118	293,110	29,850	666,644
Last month target	113,616	148,805	262,421	117,188	114,790	22,531	39,783	294,292	28,711	585,424
Better / worse than LM	↑	↑	↑	↓	↓	↑	↓	↓	↓	↑
Same period last year	179,089	236,138	415,226	187,551	200,373	35,514	69,018	492,456	51,298	958,980

Primary / Reactionary breakdown of LMs

YTD LMs

Primary	80,372	102,110	182,482	61,323	90,187	16,084	18,838	186,431	19,778	388,691
Reactionary	140,013	168,193	308,206	83,569	126,382	18,708	32,648	261,306	26,554	596,066
Total	220,385	270,303	490,688	144,892	216,569	34,792	51,486	447,738	46,332	984,758
% YTD that are Primary	36%	38%	37%	42%	42%	46%	37%	42%	43%	39%

Same Period Last Year

Primary	72,320	78,630	150,950	78,791	94,719	15,124	27,272	215,905	21,104	387,959
Reactionary	106,769	157,508	264,277	108,760	105,654	20,390	41,747	276,551	30,194	571,021
Total	179,089	236,138	415,226	187,551	200,373	35,514	69,018	492,456	51,298	958,980
% LY that were Primary	40%	33%	36%	42%	47%	43%	40%	44%	41%	40%

% change since last year

% change to Primary	+ 11%	+ 30%	+ 21%	- 22%	- 5%	+ 6%	- 31%	- 14%	- 6%	+ 0%
% change to Reactionary	+ 31%	+ 7%	+ 17%	- 23%	+ 20%	- 8%	- 22%	- 6%	- 12%	+ 4%
% change to Total	+ 23%	+ 14%	+ 18%	- 23%	+ 8%	- 2%	- 25%	- 9%	- 10%	+ 3%

2014-15 POLICING PLAN: NATIONAL TARGETS (continued)

Targets N3 - N5 are updated to: 31 Dec 2014 (Last quarter to: 30 Sep 2014)

Key:

GREEN	Achieving target
AMBER	Failing target by < 5%
RED	Failing target by ≥ 5%

A Div'n	East	South	TfL	B Div'n	Midlands	Pennine	Wales	Western	C Div'n	D Div'n	BTP	
YTD Performance	6.51	5.82	4.22	2.66	4.69	5.17	5.50	4.23	6.83	5.65	10.07	5.69
YTD Linear Target	5.48	5.48	5.48	5.48	5.48	5.48	5.48	5.48	5.48	5.48	5.48	5.48
Last month performance	4.05	3.76	2.94	1.36	2.98	3.12	3.04	3.09	5.17	3.40	7.55	3.61
Last month target	3.65	3.65	3.65	3.65	3.65	3.65	3.65	3.65	3.65	3.65	3.65	3.65
Better / worse than LM	↓	↓	↑	↓	↓	↓	↓	↑	↑	↓	↑	↓
Same period last year	3.54	n.a.	n.a.	n.a.	3.12	n.a.	n.a.	n.a.	n.a.	4.18	5.47	3.61

Note: Last Year sickness data is for the Interim Divisions (averages for the appropriate old Areas).

N3a Police officer sickness to be less than 7.3 days per officer

YTD Performance	5.52	5.84	4.36	2.24	4.56	6.42	6.91	5.04	8.25	6.61	12.05	5.86
YTD Linear Target	5.48	5.48	5.48	5.48	5.48	5.48	5.48	5.48	5.48	5.48	5.48	5.48
Last month performance	3.24	3.44	2.91	1.07	2.73	4.26	3.78	3.45	6.21	4.10	9.26	3.71
Last month target	3.65	3.65	3.65	3.65	3.65	3.65	3.65	3.65	3.65	3.65	3.65	3.65
Better / worse than LM	↓	↓	↑	↓	↓	↓	↓	↑	↑	↓	↑	↓
Same period last year	2.37	n.a.	n.a.	n.a.	2.39	n.a.	n.a.	n.a.	n.a.	4.67	5.94	3.29

N3b PCSOs sickness to be less than 7.3 days per officer

YTD Performance	6.25	5.27	3.02	5.15	6.43	2.56	3.89	4.57	3.75	4.65
YTD Linear Target	5.48	5.48	5.48	5.48	5.48	5.48	5.48	5.48	5.48	5.48
Last month performance	3.85	4.10	1.70	3.29	0.76	0.96	3.18	4.34	1.96	2.82
Last month target	3.65	3.65	3.65	3.65	3.65	3.65	3.65	3.65	3.65	3.65
Better / worse than LM	↓	↑	↓	↓	↓	↓	↑	↑	↓	↓
Same period last year	n.a.	n.a.	n.a.	5.30	n.a.	n.a.	n.a.	n.a.	3.54	4.78

N3c Police staff sickness to be less than 7.3 days per officer

YTD Performance	6.87	5.28	3.57	3.35	4.87	0.29	1.72	0.33	1.99	3.66	2.58	5.61
YTD Linear Target	5.48	5.48	5.48	5.48	5.48	5.48	5.48	5.48	5.48	5.48	5.48	5.48
Last month performance	4.35	4.69	2.73	1.82	3.59	0.06	1.46	0.33	1.26	2.02	1.02	3.60
Last month target	3.65	3.65	3.65	3.65	3.65	3.65	3.65	3.65	3.65	3.65	3.65	3.65
Better / worse than LM	↓	↑	↑	↓	↑	↓	↑	↑	↓	↓	↓	↓
Same period last year	4.01	n.a.	n.a.	n.a.	4.55	n.a.	n.a.	n.a.	n.a.	2.96	3.35	3.98

N4 Average clearance time for non-suspicious and unexplained fatalities to be less than 90 minutes

YTD Performance	83	81	60	78	77	76	88	95	81	81	80
YTD Linear Target	90	90	90	90	90	90	90	90	90	90	90
Last month performance	84	81	62	79	75	76	85	82	78	85	79
Last month target	90	90	90	90	90	90	90	90	90	90	90
Better / worse than LM	↑	↓	↑	↑	↓	↓	↓	↓	↓	↑	↓
Same period last year				71					78	88	75

N5 Average time for partial re-opening of multi-track lines to be less than 45 minutes

YTD Performance	41	33	30	39	51	47	105	60	63	0	43
YTD Linear Target	45	45	45	45	45	45	45	45	45	45	45
Last month performance	42	33	22	41	47	0	84	0	59	0	41
Last month target	45	45	45	45	45	45	45	45	45	45	45
Better / worse than LM	↑	↓	↓	↑	↓	↓	↓	↓	↓	↓	↓

N6 Increase passengers' confidence in their personal security to 77.5% by Spring 2015 (76.4% by Spring 2014).

Latest Survey (Spring 14)	76.6%	76.6%
Spring 2014 Target	76.4%	76.4%

Surveys are six-monthly in Spring & Autumn, results due in June and January.

N7 Spend 67% of budget on Frontline resources

Forecast at Quarter 2	68.0%	68.0%
Quarter 2 Target	67%	67%

Monitored quarterly.

N8 Rail staff rate personal security at work "Good" or "Very good"

March 2015 performance		
March 2015 target	66.4%	66.4%
March 2014 performance	65.1%	65.1%

Rail staff survey is annual in March; performance data will be available in April 2015.

2014-15 POLICING PLAN: LOCAL TARGETS, "B" and "D" Divisions

Targets E1-3, E5, S1-3, S5, T1-4, T7 and D1 are updated to: 31 Dec 2014 (Last quarter to: 30 Sep 2014)
 Other "B" and "D" Division Local Targets are updated to: 31 Dec 2014 (Last quarter to: 30 Sep 2014)

Key:

GREEN	Achieving target
AMBER	Failing target by < 5%
RED	Failing target by ≥ 5%

B Div: East	Reduce ToPP by 10%	Reduce violence towards staff	Reduce cycle crime by 5%	20 targeted Level X PSPs	Violent crime detection rate	Escorted football trains	Football banning orders
	E1	E2	E3	E4	E5	E6	E7
YTD Performance	1850	384	1196	5	53.8%	147	94%
YTD Linear Target	1807	359	1136	15	48%	234	92%
Last month performance	1213	267	865	0	48.4%	54	90%
Last month target	1203	239	756	10	48%	156	92%
Better / worse than LM	↓	↑	↑	↓	↑	↑	
Same period last year	2050	327	1313	n.a.	47%	n.a.	n.a.

B Div: South	Reduce ToPP by 10%	Reduce violence towards staff	Reduce cycle crime by 5%	20 targeted Level X PSPs	Violent crime detection rate
	S1	S2	S3	S4	S5
YTD Performance	1831	545	1906	20	49%
YTD Linear Target	1869	543	1782	15	42%
Last month performance	1266	370	1365	0	48%
Last month target	1244	361	1186	10	42%
Better / worse than LM	↑	↑	↑	↓	↑
Same period last year	2,082	527	2,069	n.a.	42%

B Div: TfL	Reduce ToPP by 10%	20% increase in sexual detections	Reduce violence towards staff	Increase skimming fraud detections	Reduce lost customer hours	120 DLR joint operations	Violent crime detection rate
	T1	T2	T3	T4	T5	T6	T7
YTD Performance	3161	137	312	28	953,719	91	32%
YTD Linear Target	3,460	111	314	23	1,127,749	90	34%
Last month performance	1970	103	193	23	515,177	63	35%
Last month target	2,303	74	209	15	751,833	60	34%
Better / worse than LM	↓	↓	↓	↓	↑	↓	↓
Same period last year	3,905	108	315	26	1,260,950	n.a.	33%

D Division	Reduce ToPP by 5%	Achieve 75% satisfaction for PSPs tackling: Disruption			Victims of Crime satisfaction rating	15 football jt operations	Football banning orders	Commonwealth Games Attendance time	
	D1	D2	D3	D4	D5	D6	D7	D8	D9
YTD Performance	255	77%	92%	72%	87%	13	100%	95%	98
YTD Linear Target	244	75%	75%	75%	92%	11	80%	95%	159
Last month performance	177	55%	97%	89%	87%	11	100%	95%	90
Last month target	162	75%	75%	75%	92%	7	80%	95%	128
Better / worse than LM	↑	↑	↓	↓	↓	↓	←	←	↑
Same period last year	271	Monitored quarterly			100%	n.a.	n.a.	n.a.	n.a.

2014-15 POLICING PLAN: LOCAL TARGETS, "C" Division

Key:

Page 4

For each Sub-Division, Targets 1-7 are updated to: 31 Dec 2014 (Last quarter: 30 Sep 2014)
 Other Local "C" Division Targets are updated to: 31 Dec 2014 (Last quarter: 30 Sep 2014)

GREEN	Achieving target
AMBER	Failing target by < 5%
RED	Failing target by ≥ 5%

	Reduce ToPP by 5%	Reduce violence to staff by 5%	Staff assaults detection rate	Reduce Fatalities LMs by 4%	Reduce Level X LMs by 2% (Western 4%)	Reduce Trespass & vandalism LMs by 8% (Wales 7%)	Reduce cable related offences by 5%	Immediate Incidents in 20 mins	Priority Incidents In 60 mins	Targeted PSPs
Midlands	M1	M2	M3	M4	M5	M6	M7	M8	M9	M10
YTD Performance	607	253	56%	39,531	10385	88,622	50	92%	99%	6
YTD Linear Target	620	239	55%	65,189	5,425	81,281	137	92%	99%	4
Last month performance	407	176	61%	28,368	3126	60,972	24	92%	99%	3
Last month target	413	159	55%	43,380	3,610	54,089	91	92%	99%	3
Better / worse than LM	↑	↑	↓	↑	↓	↑	↓	←	←	↑
Same period last year	657	254	50%	72,076	5,364	91,927	159	n.a.	n.a.	n.a.

	P1	P2	P3	P4	P5	P6	P7	P8	P9	P10
Pennine	P1	P2	P3	P4	P5	P6	P7	P8	P9	P10
YTD Performance	1064	427	55%	44,946	13487	139,768	138	92%	99%	6
YTD Linear Target	1,096	431	58%	39,281	10,682	106,252	214	92%	99%	7
Last month performance	720	291	50%	31,811	7088	92,801	90	92%	99%	3
Last month target	729	287	58%	26,140	7,109	70,706	142	92%	99%	5
Better / worse than LM	↑	↑	↑	↑	↓	↓	↓	←	←	↑
Same period last year	1,193	449	58%	47,813	11,648	123,229	233	n.a.	n.a.	n.a.

	W1	W2	W3	W4	W5	W6	W7	W8	W9	W10
Wales	W1	W2	W3	W4	W5	W6	W7	W8	W9	W10
YTD Performance	172	84	49%	10,068	2104	20,382	43	89%	98%	3
YTD Linear Target	171	79	60%	5,641	2,922	21,883	75	92%	99%	3
Last month performance	123	52	67%	8,695	1093	14,313	31	94%	99%	3
Last month target	114	53	60%	3,754	1,945	14,562	50	92%	99%	1
Better / worse than LM	↑	↓	↓	↑	↓	↑	↑	↓	↓	↓
Same period last year	189	83	45%	6,857	3,391	24,162	92	n.a.	n.a.	n.a.

	G1	G2	G3	G4	G5	G6	G7	G8	G9	G10
Western	G1	G2	G3	G4	G5	G6	G7	G8	G9	G10
YTD Performance	435	167	64%	17,771	3949	29,766	13	94%	98%	3
YTD Linear Target	510	180	64%	20,836	8,357	28,959	17	92%	99%	3
Last month performance	300	126	67%	8,239	3061	22,818	12	94%	99%	3
Last month target	339	120	64%	13,866	5,562	19,271	12	92%	99%	2
Better / worse than LM	↑	↑	↓	↓	↑	↑	↑	←	↓	↓
Same period last year	556	197	68%	20,945	9,952	35,848	19	n.a.	n.a.	n.a.

"C" Division Totals For comparison only: these are not formal targets at Divisional level

YTD Performance	2278	931	57%	112,316	29,925	278,537	244			
YTD Linear Target	2397	929	56%	130,947	27,386	238,375	443			
Last month performance	1550	645	61%	77,113	14,368	190,903	157			
Last month target	1,595	619	56%	87,140	18,226	158,628	295			
Better / worse than LM	↑	↑	↓	↑	↓	↑	↓			
Same period last year	2,595	983	55%	147,691	30,355	275,166	503			

Agenda item 3, Appendix C BTP Force Crime Group Data, April to December 2014

01A Violence against the Person									
Sub Division	Rec 13/14	Rec 14/15	% Diff	Det 13/14	Det 14/15	% Diff	Det Rate 13/14	Det Rate 14/15	Diff
East	1105	1311	19%	572	623	9%	52%	48%	-4%
Midlands	386	466	21%	219	234	7%	57%	50%	-7%
Pennine	1032	1015	-2%	586	537	-8%	57%	53%	-4%
Scotland	244	316	30%	175	221	26%	72%	70%	-2%
South	1487	1664	12%	642	666	4%	43%	40%	-3%
TFL	1494	1637	10%	638	536	-16%	43%	33%	-10%
Wales	171	195	14%	98	95	-3%	57%	49%	-9%
Western	215	233	8%	136	130	-4%	63%	56%	-7%
Total	6134	6837	11%	3066	3042	-1%	50%	44%	-5%

02A Sexual Offences									
Sub Division	Rec 13/14	Rec 14/15	% Diff	Det 13/14	Det 14/15	% Diff	Det Rate 13/14	Det Rate 14/15	Diff
East	120	160	33%	45	56	24%	38%	35%	-3%
Midlands	54	53	-2%	15	17	13%	28%	32%	4%
Pennine	95	118	24%	42	54	29%	44%	46%	2%
Scotland	29	42	45%	18	23	28%	62%	55%	-7%
South	191	203	6%	65	54	-17%	34%	27%	-7%
TFL	319	434	36%	104	135	30%	33%	31%	-1%
Wales	14	13	-7%	5	7	40%	36%	54%	18%
Western	27	41	52%	7	24	243%	26%	59%	33%
Total	849	1064	25%	301	370	23%	35%	35%	-1%

03A Criminal Damage/ Malicious Mischief									
Sub Division	Rec 13/14	Rec 14/15	% Diff	Det 13/14	Det 14/15	% Diff	Det Rate 13/14	Det Rate 14/15	Diff
East	397	429	8%	51	179	251%	13%	42%	29%
Midlands	209	254	22%	45	43	-4%	22%	17%	-5%
Pennine	405	395	-2%	77	103	34%	19%	26%	7%
Scotland	164	157	-4%	49	30	-39%	30%	19%	-11%
South	605	701	16%	138	100	-28%	23%	14%	-9%
TFL	434	408	-6%	91	171	88%	21%	42%	21%
Wales	59	63	7%	10	16	60%	17%	25%	8%
Western	96	89	-7%	29	23	-21%	30%	26%	-4%
Total	2369	2496	5%	490	665	36%	21%	27%	6%

04A Serious Line Of Route Offences									
Sub Division	Rec 13/14	Rec 14/15	% Diff	Det 13/14	Det 14/15	% Diff	Det Rate 13/14	Det Rate 14/15	Diff
East	100	120	20%	36	25	-31%	36%	21%	-15%
Midlands	154	171	11%	37	43	16%	24%	25%	1%
Pennine	269	236	-12%	76	68	-11%	28%	29%	1%
Scotland	78	60	-23%	10	7	-30%	13%	12%	-1%
South	150	146	-3%	17	29	71%	11%	20%	9%
TFL	54	58	7%	11	9	-18%	20%	16%	-5%
Wales	62	56	-10%	12	16	33%	19%	29%	9%
Western	48	47	-2%	19	12	-37%	40%	26%	-14%
Total	915	894	-2%	218	209	-4%	24%	23%	-0%

04B Less Serious Line Of Route Offences									
Sub Division	Rec 13/14	Rec 14/15	% Diff	Det 13/14	Det 14/15	% Diff	Det Rate 13/14	Det Rate 14/15	Diff
East	713	741	4%	204	225	10%	29%	30%	2%
Midlands	861	967	12%	206	165	-20%	24%	17%	-7%
Pennine	1822	1691	-7%	434	325	-25%	24%	19%	-5%
Scotland	874	795	-9%	180	169	-6%	21%	21%	1%
South	1164	935	-20%	427	269	-37%	37%	29%	-8%
TFL	214	229	7%	92	79	-14%	43%	34%	-9%
Wales	496	448	-10%	128	95	-26%	26%	21%	-5%
Western	395	365	-8%	96	97	1%	24%	27%	2%
Total	6539	6171	-6%	1767	1424	-19%	27%	23%	-4%

05A Theft of Passenger Property									
Sub Division	Rec 13/14	Rec 14/15	% Diff	Det 13/14	Det 14/15	% Diff	Det Rate 13/14	Det Rate 14/15	Diff
East	2050	1850	-10%	113	95	-16%	6%	5%	-0%
Midlands	660	607	-8%	36	35	-3%	5%	6%	0%
Pennine	1272	1152	-9%	116	98	-16%	9%	9%	-1%
Scotland	271	255	-6%	35	40	14%	13%	16%	3%
South	2082	1831	-12%	107	76	-29%	5%	4%	-1%
TFL	3905	3161	-19%	259	180	-31%	7%	6%	-1%
Wales	189	172	-9%	21	10	-52%	11%	6%	-5%
Western	556	435	-22%	40	27	-33%	7%	6%	-1%
Total	10985	9463	-14%	727	561	-23%	7%	6%	-1%

06A Motor Vehicle/ Cycle Offences									
Sub Division	Rec 13/14	Rec 14/15	% Diff	Det 13/14	Det 14/15	% Diff	Det Rate 13/14	Det Rate 14/15	Diff
East	1508	1454	-4%	179	164	-8%	12%	11%	-1%
Midlands	741	758	2%	104	121	16%	14%	16%	2%
Pennine	586	594	1%	87	79	-9%	15%	13%	-2%
Scotland	103	142	38%	13	26	100%	13%	18%	6%
South	2356	2191	-7%	463	454	-2%	20%	21%	1%
TFL	257	245	-5%	23	12	-48%	9%	5%	-4%
Wales	95	110	16%	20	18	-10%	21%	16%	-5%
Western	380	369	-3%	34	22	-35%	9%	6%	-3%
Total	6026	5863	-3%	923	896	-3%	15%	15%	-0%

07A Robbery Offences									
Sub Division	Rec 13/14	Rec 14/15	% Diff	Det 13/14	Det 14/15	% Diff	Det Rate 13/14	Det Rate 14/15	Diff
East	69	47	-32%	35	35	0%	51%	74%	24%
Midlands	20	17	-15%	3	12	300%	15%	7%	56%
Pennine	16	26	63%	8	11	38%	50%	42%	-8%
Scotland	17	11	-35%	18	7	-61%	106%	64%	-42%
South	147	98	-33%	63	53	-16%	43%	54%	11%
TFL	64	56	-13%	15	16	7%	23%	29%	5%
Wales	5	5	0%	5	2	-60%	100%	40%	-60%
Western	2	4	100%	1	1	0%	50%	25%	-25%
Total	340	264	-22%	148	137	-7%	44%	52%	8%

08A Theft of Railway/ Commercial Property and Burglary Offences									
Sub Division	Rec 13/14	Rec 14/15	% Diff	Det 13/14	Det 14/15	% Diff	Det Rate 13/14	Det Rate 14/15	Diff
East	757	815	8%	296	365	23%	39%	45%	6%
Midlands	320	287	-10%	86	77	-10%	27%	27%	0%
Pennine	962	793	-18%	422	390	-8%	44%	49%	5%
Scotland	224	182	-19%	87	67	-23%	39%	37%	-2%
South	675	627	-7%	269	230	-14%	40%	37%	-3%
TFL	156	170	9%	67	35	-48%	43%	21%	-22%
Wales	138	96	-30%	37	25	-32%	27%	26%	-1%
Western	100	104	4%	23	22	-4%	23%	21%	-2%
Total	3332	3074	-8%	1287	1211	-6%	39%	39%	1%

09A Serious Public Disorder Offences									
Sub Division	Rec 13/14	Rec 14/15	% Diff	Det 13/14	Det 14/15	% Diff	Det Rate 13/14	Det Rate 14/15	Diff
East	593	580	-2%	362	296	-18%	61%	51%	-10%
Midlands	326	334	2%	241	199	-17%	74%	60%	-14%
Pennine	748	714	-5%	530	471	-11%	71%	66%	-5%
Scotland	2	7	250%	2	3	50%	100%	43%	-57%
South	882	864	-2%	435	327	-25%	49%	38%	-11%
TFL	659	654	-1%	337	238	-29%	51%	36%	-15%
Wales	146	144	-1%	107	83	-22%	73%	58%	-16%
Western	236	192	-19%	175	127	-27%	74%	66%	-8%
Total	3592	3489	-3%	2189	1744	-20%	61%	50%	-11%

09B Less Serious Public Disorder Offences									
Sub Division	Rec 13/14	Rec 14/15	% Diff	Det 13/14	Det 14/15	% Diff	Det Rate 13/14	Det Rate 14/15	Diff
East	841	1183	41%	449	484	8%	53%	41%	-12%
Midlands	694	668	-4%	386	258	-33%	56%	39%	-17%
Pennine	2266	1776	-22%	1462	1020	-30%	65%	57%	-7%
Scotland	1018	1147	13%	690	721	4%	68%	63%	-5%
South	1325	1664	26%	682	498	-27%	51%	30%	-22%
TFL	1509	1219	-19%	1055	511	-52%	70%	42%	-28%
Wales	329	355	8%	185	155	-16%	56%	44%	-13%
Western	348	331	-5%	202	132	-35%	58%	40%	-18%
Total	8330	8343	0%	5111	3779	-26%	61%	45%	-16%

10A Serious Fraud Offences									
Sub Division	Rec 13/14	Rec 14/15	% Diff	Det 13/14	Det 14/15	% Diff	Det Rate 13/14	Det Rate 14/15	Diff
East	59	74	25%	61	53	-13%	103%	72%	-32%
Midlands	12	24	100%	8	12	50%	67%	50%	-17%
Pennine	44	36	-18%	41	24	-41%	93%	67%	-27%
Scotland	45	25	-44%	27	8	-70%	60%	32%	-28%
South	42	45	7%	26	29	12%	62%	64%	3%
TFL	141	77	-45%	108	56	-48%	77%	73%	-4%
Wales	5	2	-60%	3	1	-67%	60%	50%	-10%
Western	2	3	50%	4	2	-50%	200%	67%	-133%
Total	350	286	-18%	278	185	-33%	79%	65%	-15%