



≥ ≤ Ω ^

To search type and hit enter

HOME

FEATURED ARTICLES

INFRASTRUCTURE & ROLLING STOCK

INDUSTRY NEWS

PASSENGER & FREIGHT

SUBSCRIBE

ABOUT

CONTACT

DB awarded consultancy role on Mecca-Medina high speed rail project

BY NEWS

IN HIGH-SPEED RAIL | RAIL NEWS | RAIL PROJECTS

23 SEP, 2013

0



Photo: Foster+Partners.

DB International has been appointed

FEATURES

Rail Interiors: The Inside Story

Controlling Crossrail

King's Cross countdown into single figures

LATEST, FEEDBACK, COMMENTS

N	=	D
	Quebec government confirms Blue line extension	September 24, 2013
	Network Rail begins second phase of ERTMS testing	September 24, 2013
	Railway reopens between Russia and North Korea	September 24, 2013
	DB awarded consultancy role on Mecca-Medina high speed rail project	September 23, 2013

by the Saudi Railways Organization (SRO) to review the design and construction of the country's first high-speed railway.

The 450-kilometre double-track line, which will create a high-speed link between Jeddah and the holy cities of Mecca and Medina, is expected to have a maximum operational speed of 320 km/h and include five stations – three in the main cities and two others at Jeddah International Airport, and the King Abdullah Economic City.

DB International will work with SRO to develop the initial design concept through to the detailed design works for the track alignment and S&T systems.

The consultancy will also provide technical support toward the construction of the main control centre and catenary system, as well as the manufacture of the line's rolling stock.

Niko Warbanoff, chairman of the board of managing directors of DB International, said: "In addition to the success of our work in Qatar, the United Arab Emirates and in this case in Saudi Arabia, the Middle East continues to be a major factor behind the company's excellent performance. This will be an opportunity for us to demonstrate our capabilities once again."

Share:

Email	Twitter 4
<input type="text"/>	<input type="text"/>
<input type="text"/>	<input type="text"/>

CV EF CN FACEBCK

https://www.facebook.com/globalrailnews



Like

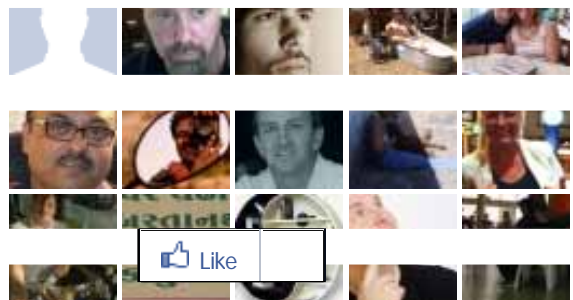


Global Rail News shared WTC Progress's photo.



Support arches for the Oculus are installed at WTC Transportation Hub.

2,618 people like Global Rail News.



Facebook social plugin

The fastest growing membership charity in the public transport industry. **Just £1 a week, so join today!**



tbf Transport Benevolent Fund

The Transport Benevolent Fund known as TBF is a registered charity in England and Wales (1038002) and in Scotland (SC246013)



a complete workwear solution



FFEVICLS

STCFY

à

Regiolis makes Lorraine debut

NEXT STCFY

Railway reopens between Russia and North Korea

à

Railway Children recruit for new volunteer network

26 JUL, 2012

Honourable Transport outcome for London sets out investment plan

3 MAY, 2012

4 DEC, 2012

AROUND THE WEB

Heart Attack:
How Your Body
What the Bible
Says About
How much state
pension will you
4 Newfound
Reasons Why

ALSO ON [What's this?](#)
GLOBAL RAIL NEWS

How high-speed
rail will bring
Regions to
benefit most
HS2 hits back at
high-speed
PKP Intercity
orders 20 EMUs

0 comments

0



Leave a message...

Best ▾

- 1 ▾

No one has commented yet.

L [High Speed Rail](#) [DB awarded consultancy role on Mecca-Medina high speed rail project](#)



≥ ≤ Ω ^

