



- HOME
- FEATURED ARTICLES
- INFRASTRUCTURE & ROLLING STOCK
- INDUSTRY NEWS
- PASSENGER & FREIGHT
- SUBSCRIBE
- ABOUT
- CONTACT

SNCF targets greater international involvement

BY NEWS IN BUSINESS & RAIL NEWS & RAIL PROJECTS

11 JUL, 2013

0



Photo: SNCF.

SNCF has said it aims to increase the share of its revenue coming from international projects and operations to 30 per cent by 2017.

FEATURES

Gallery: New York's amazing domed subway station

National Track Plant Exhibition: Have you registered yet?

HS2 should make Birmingham a gateway to Europe, Centro

LATEST, FEATURES, COMMENTS

N

=

D



Canadian Pacific agrees potash freight deal

July 11, 2013



Delivering dramatic Dalarnock

July 11, 2013



Plans for Cambridge science park station go on show

July 11, 2013



Franchising massively increasing railway investment,

July 11, 2013

As well as operating national and regional services throughout France, the state-owned rail giant, through its subsidiaries, has delivered projects around the world in Australia, Morocco, Russia, South America, the UK, the Middle East and India.

Currently 25 per cent of SNCF's revenue comes from its international enterprises.

Examples include the Dubai Metro, which Systra played a major role in, Arep which has designed several key railway stations around the world, including China's Wuhan station (pictured), and Keolis, which runs the UK's high-speed Javelin trains.

President of SNCF Guillaume Pepy said: "France is on the podium of champions public transport. This is a growth driver for the group."

Share:

The fastest growing membership charity in the public transport industry. **Just £1 a week, so join today!**



The Transport Benevolent Fund known as TBF is a registered charity in England and Wales (1096032) and in Scotland (SC240013)

FFEVICLS
STCFY
Svo
á Paulo
launches
Line 18
consultation

NEXT STCFY
Franchising
massively
increasing
railway à
investment,
says

CVEF CN FAC

GLOBAL RAIL NEWS **Global Rail News**

GLOBAL RAIL NEWS **Global Rail News**
Designs released for second Cambridge rail station.

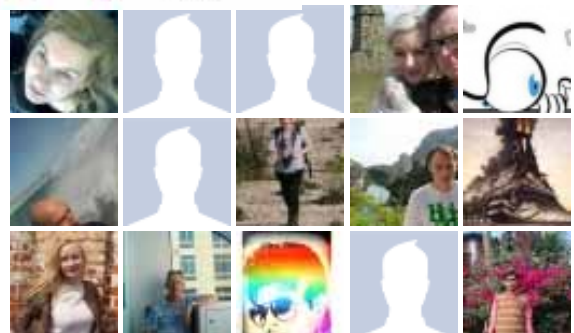
www.globalrailnews.com/2013/07/11/plans-for-cambridge-science-park-station-go-on-show/

Plans for Cambridge science park station go on show

www.globalrailnews.com

Plans for a new station at Britain's oldest science park are to go before

the County of Cambridge News.



Facebook social plugin

Project Focus: The Interchange	St Pancras welcomes world's tallest LEGO Christmas tree	Crime down on London's transport network
30 APR, 2013	6 DEC, 2011	30 MAY, 2012

ALSO ON GLOBAL RAIL NEWS

AROUND THE WEB [What's this?](#)

[AnsaldoBreda blames](#)

[Heart Attack Signals: How to](#)

[Warning that Thameslink train](#)

[4 Newfound Reasons Why](#)

[New terminal 'doubles rail](#)

[Post-Match Analysis: Novak](#)

[Award double for 'Dumb Ways](#)

[9 Things You Can Do Today](#)

0 comments

0



Leave a message...

Best

- 1

No one has commented yet.

Saying 'Thank You' to the people who keep the UK Rail industry moving

2013 Nominations Now Open



the Rail Staff AWARDS

GLOBAL RAIL NEWS

≥ ≤ Ω ^

GLOBAL RAIL NEWS

RAILSTAFF

THE RAIL ENGINEER

RAILWAYFECFLE.COM

THE RAILSTAFF AWARDS

RAIL HF, FEC & SKILLS AWARDS

RAIL SAFETY SUMMIT

RAIL MEDIA

© 2013. RAIL MEDIA. ALL RIGHTS RESERVED.

à