



find out how



Boris Johnson asked to help cut Heathrow Express fare



£20 single: The Heathrow Express

Share on Facebook 9 25 0

05 April 2013

Boris Johnson was today urged to back a campaign to slash ticket prices on the Heathrow Express.

Hounslow council has written to the Mayor asking him to help persuade Heathrow, which runs the high-speed rail service, to adopt Transport for London's fares structure. It would mean the existing £20 single fare between the airport and Paddington would be reduced to the standard TfL cash fare of just £5.50.

Council chiefs argue that it would make Heathrow more popular — as well as help cut congestion and road traffic pollution. They also say passengers ought to be able to use Oyster or travelcards to pay for trips.

An airport spokeswoman said: "Heathrow Express is a premium, non-stop service that reaches central London in just 15 minutes — faster than any other service. For residents there are stopping services provided by Heathrow Connect and the Piccadilly line, plus free bus services paid for by Heathrow."

A spokesman for Mr Johnson said: "The Mayor has no control over fares for the privately operated Heathrow Express."

Share on Facebook 9 9 25 0

Ads by Google

Ambulance Transport

Ambulance Transport. Experienced Paramedics Technicians & Attendants
www.e-zecondemand.co.uk

Visiting Malaysia?

Stay Connected As You Travel. Roam With Celcom In Malaysia!
Celcom.com.my/Roam-In-Malaysia

2013 Annuity Calculator

Get up to 40% More Pension Income. Free Calculator and Expert Advice!
www.compare-annuity.com/calculate

Airport VIP Lounge Access

Access 600 Airport VIP Lounges Worldwide with a Priority Pass Card
www.prioritypass.com

Top stories in News

Gwyneth Paltrow : Botox injections made me look like Joan Rivers



Fairytale of New York turns Matilda the musical into a transatlantic smash

Katherine Jenkins, Michael Crawford and Andrew Neil on guest list at Lady Thatcher's funeral

Arsenal fan banned for throwing banana at Gareth Bale

Out, damned drunks!

Ads by Google

Reporting Tool for SAP

Instant Analysis & Insightful Data. Contact us for a demo on your data!
www.everyangle.com

Learn to Speak English

Proven Method, Courses online 24/7 30 Conversation Classes for £1
Englishtown.com/Limited-Offer

Riveford Organic Food

Free Cook Book When You Try Our Delicious Organic Veg Boxes
Riverford.co.uk/Free-Cook-Book

Business Forecasting

Business Forecasting and Planning Software. Free Demo!
www.prophix.co.uk

News in Pictures

Bumps-a-daisy... from the Duchess of Cambridge to Coleen Rooney, a plethora of pregnant celebrities

Send international payments Bank-beating exchange rates No hidden fees ES PARTNER

Most Read | Commented | Shared



'Hounslow slasher' Shasha Masamba is jailed for 18 years



The short, bright life of climate change scientist Dr Katharine Giles, killed in Victoria lorry crash



Hijacked Margaret Thatcher death song Din Dong! The Witch is Dead set to be No1



Bare-faced: celebrities snapped without their make-up



Before they were famous the dramatic makeovers of stars

Comments



Post a new comment

Login

Post

22 Comments

[RSS](#) | [Subscribe](#)



Anonymous 22 hours ago

Yes absaloute greed, unforgivable.

Reply

+1



Anonymous 6 days ago

The trains (4 per hour) are running irrespective of whether full or not. Makes economic sense to have bums on seats and if it means a price reduction then so be it. I actually pay less by using a shuttle service and it is much more convenient especially since Crossrail work at Paddington deviously removed the drop and go facility. When my friends come from abroad and convert the £20 to their currency they opt for Heathrow Connect.

Reply

[1 reply](#)

0



Anonymous 6 days ago

Taxis now use a new ramp on opposite side of Paddington Station. As for drop and. O well buses still stop in Praed Street!

Reply

+1



tweet 7 days ago

let it's greed, before customer service, be it's nadir.

Reply

+1



Windsorian 7 days ago

The £5.60 fare for the Heathrow Connect service is a single from Hayes & Harlington; a return is £11.20 (see Heathrow Connect web-site).

However, the Connect service starts at Paddington from where (via a stopping service) a single to Heathrow is £9.50 and a return is £19.00 (Railcard discounts are available).

Reply

+3



daihaic 7 days ago

Heathrow Express is owned by BAA Heathrows' owners who run and promote it to the detriment of all other airport links as a Cash Cow. Surely there should be a trade off - get to have more passengers = easier cheaper access. Simples?

Reply

[1 reply](#)

+1

dougfuters 7 days ago

and quite possibly to their own detriment and the congestion on the M4

Reply

+1

otro1 7 days ago

Significant reductions in the Heathrow Express fare could be part of a meaningful surface access policy for Heathrow which could help to address the illegal air quality in the surrounding area. A considerable part of this may be due to vehicles accessing the airport. The airport needs to get more people using public transport to travel to it for the health of its neighbours.

Reply

[3 replies](#)

+4

Windsorian 7 days ago

Then write to the (Davies) Airports Commission with your suggestion.

Reply

+2

Anonymous 7 days ago

The best solution would be to extend the railway from Heathrow to a junction with South West Trains but problems re petrolheads moaning about level crossings and Petrolhead ex Transport Secretary put paid to these plans. Time for new TS to reconsider link to SWR?

Reply

[1 reply](#)

+1

Windsorian 6 days ago

A southern (Airtrack) route from T5 to Staines would have no level crossings It was proposed to run alongside the M25 to where it would join the Staines / Windsor & Eton Riverside railway allowing it to access a re-built Staines station.



The way they were: stars before they were famous



Bare-faced: celebrities snapped without their make-up



The outfits that went wrong: fashion fails from celebrities on the red carpet



Polished to perfection... how the Duchess of Cambridge turned into a style icon

SPONSORED FEATURES



48 Hours in York with Simon Calder

Watch travel expert Simon Calder explore one of the most beautiful small cities in the world.

[British Airways](#)

[Chang Beer](#)

[Cayman Islands](#)

[Tube 150](#)

[ENO prize](#)

[The O2](#)

NEWSLETTER SIGNUP

Sign-up for our weekly Reader Offers email

A fantastic selection of offers, giveaways and promotions.

[Sign-up now](#)

Party people - the stars out in London

This is Option J3 in the 2011 London & SE RUS which Network Rail propose as an interim measure until the level crossing problems can be sorted out.

Under the original Airtrack plan BAA (Heathrow) would compulsorily purchase the land required to construct, operate and maintain this extension of the existing Heathrow Express route.

+2

 **Rog Enfield** 7 days ago

I recently needed to fly somewhere. So, cheapo from Gatwick, Luton, Stanstead ? or BA from Heathrow.

Taking to and from airport transport costs into consideration, Heathrow was cheapest and most convenient, BUT only if using the Tube. This would not have been the case using Heathrow Express.

[1 reply](#) +2

 **Anonymous** 7 days ago

Then use Heathrow Connect!

+3

 **anonymous** 7 days ago

For the benefit of getting to Paddington in 15 minutes surely this service should cost WAY more than any other means of travel, eg taxi £50-£70?

[2 replies](#) -2

 **Anonymous** 7 days ago

Paddington -Ah the station built out in the wilds of West London!

Shame it was not built where Baker Street is !
 [1 reply](#) -1

 **Anonymous** 6 days ago

When Paddington was built it was in near open countryside as the Metropolitan Board of Works (LCC PREDECESSOR) would not let rail companies into central London as it then was so Stations we have we're built around London !

Paddington remains an awkward station to get to and that is why Crossrail will make a major improvement as passengers will be able to board at central stations and either do through journeys or change trains along the route something that re-,extension of Crosrail to Reading as originally planned would make a major difference.

+1

 **PatrickDalston** 7 days ago

Why? Those people flying from Heathrow would hardly notice the cost of a few pounds extra for the fare.

[1 reply](#) 0

Anonymous 7 days ago

Indeed. Or they can use the Piccadilly line, which may add a few minutes to their journey (it all depends on where they were intending to go after arriving at Paddington).

+1

Anonymous 7 days ago

A spokesman for Mr Johnson said: "The Mayor has no control over fares for the privately operated Heathrow Express."

Then nationalise the rail link and run it for the benefit of travellers, not the money-grabbers who operate the airport. Have you seen how much they charge for the "privilege" of parking, even the short-stay?

[3 replies](#) +3

anonymous 7 days ago

If it is nationalised, a few years down the line it will be sold on again or refranchised

+2

dougfuters 7 days ago

surely it will be 'nationalised' when it becomes part of Crossrail?

[1 reply](#) -2

Anonymous 7 days ago

Only Heathrow Connect (the stopping service) will become part of Crossrail !

Heathrow Express will continue as now.
+2



Celebrity tattoos: the good, the bad and the ugly



From ugliest building to most depressing view, the Shit London Awards winners



News pictures of the day



BUY RENT

e.g. Oxford or NW3

Price range

Min price

to

Max price

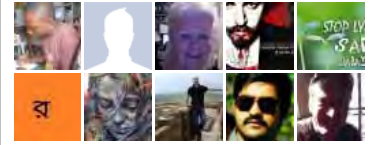
Bedrooms

Min beds

Find us on Facebook

ES London Evening Standard

28,726 people like London Evening Standard.



Facebook social plugin

EVENING STANDARD PARTNERS

What is it really like to stay in a private hospital?



Show Me

Between: and

Location:

By clicking 'search' you are agreeing to our Terms of Use.

ESfashionstore



DOROTHY PE
£29.00

Don't Miss



[Punks love Maqqie](#)



[Ed Balls's London](#)



[Party people](#)



[Life of Ryan](#)



[Jesus, he's hot!](#)



[Archive](#)

[Topics](#)

[Contact](#)

[Privacy](#)

[Cookies](#)

[Terms](#)

[Code of Conduct & Complaints](#)

[Promotion Rules](#)

[Community Rules](#)

[Syndication](#)

[The Independent](#)

[Homes & Property](#)

[Business Connections](#)

[This is London](#)

[ES Magazine Subscription](#)

[Get Listed](#)

[Brand Advertising](#)

[© 2012 Evening Standard Limited](#)

[ES Rentals](#)

[Jobsite](#)

[Free Evening Standard apps](#)

[This is London Magazine](#)