



Published: 04/02/2013 10:08 - Updated: 04/02/2013 18:08

Like

3

Tweet

10

## Crackdown on dangerous cycling ramped up

Written by Raymond Brown

A crackdown on cyclists flouting traffic laws is being ramped up today in Cambridge city centre.

Police Specials will tackle anti-social cycling as part of Operation Pedalo following the operation in December.

The officers will be patrolling hot spot areas to reduce cycle crime, and target lighting and pavement offences.

The aim of the operation is to reduce road deaths and casualties amongst cyclists, and reduce cycle crime and anti-social cycling in the city, police said.

Areas such as Market Street, Sidney Street, Downing Street, Regent Street, Drummer Street, St Andrew's Street, Arbury Road, Milton Road, Mill Road, Silver Street, Fitzroy Street, Burleigh Street, Hills Road and Elizabeth Way Bridge will be targeted.

Specials will be patrolling at traffic light junctions looking out for those who commit red-light offences.

The LIT (Lights Instead of Tickets) scheme will be in action, which gives those caught riding without lights seven days to buy new lights to avoid paying the fine.

The crackdown is being backed by Sir Graham Bright, Cambridgeshire Police and Crime Commissioner.

He said: "The law is the law, whether you are talking about pedestrians, cyclists or motorists. But there are more bicycles per head of population in Cambridge than almost anywhere else in the world. As a result of concerns that were brought to my attention during my election campaign I asked the Chief Constable to tackle it.

"I want to grow the number of Specials, who I think do an excellent job. Seeing two of the areas I have highlighted working hand in hand is really good."

Special Superintendent John Haslop said: "This is another chance to educate cyclists and enforce the law. There is a lot of dangerous cycling within Cambridge and we have heard frustration from local residents at neighbourhood meetings where anti-social cycling has been named as a priority.

"We want to tackle this problem and reduce the number of collisions and more than 30 Specials will be working on this operation."



### Quick Links

[Top headlines](#)
[National headlines](#)
[Traffic & travel](#)
[Cambridge headlines](#)
[Ely headlines](#)
[Newmarket headlines](#)
[Huntingdon/St Ives/St Neots headlines](#)
[Royston headlines](#)
[Haverhill headlines](#)
[Saffron Walden headlines](#)
[Sport](#)
[National sport](#)
[Business](#)
[What's On](#)
[Nostalgia](#)
[Health](#)
[Beauty](#)
[Education](#)
[Training](#)
[Fashion & Shopping](#)
[Home & Garden](#)
[Animal Rescue](#)
[Obituaries](#)
[Blogs](#)
[Weather](#)
[Sudoku](#)

### MOST COMMENTS

### MOST POPULAR

Investigation launched after cyclist seriously injured

New mum disqualified after car overturned in accident

Text to ex-wife costs dad £160

Man in hospital amid fears others may be trapped in house fire

Gate fault 'putting youngsters crossing rail line in danger'

Councils 'ready to pay' to support A14 upgrade

### Today's Features



#### GARDENING

**Planting for the future to protect the past**

#### HOMES AND GARDENS

**All a matter of taste for Jane's cache of kitsch**

#### CHOICE

**Abigail's Party at Cambridge Arts Theatre**

#### WE LOVE...

**Stomp it out in a statement shoe**

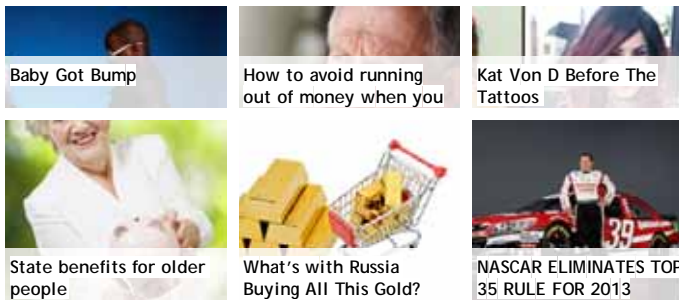
### NATIONAL NEWS

### NATIONAL SPORT

**Stars out for television awards**

### From the Web

by Tabool



< Back

- Man accused of murdering student
- Firm eyes up camera chain Jessops
- Winner given 'perfect' funeral
- Woman denies kissing footballers
- Missing brother and sister found

### COMMENTS LOGIN

User Name :

Password :

Remember Me

Login

[Register To Comment](#) | [Lost Password ?](#)

These comments are not moderated. Please report any messages which do not comply with our [terms and conditions](#) by clicking the report abuse button.

First 1 2 3 4 5 6 7 Last

#### **haddock**

06/02/2013 11:41

Pete, Road runner has difficulties with basic math. He also apparently believes that only cyclists answer census questions. "shrug" he wont even believe facts..... one of these days hell actually discuss something like an adult...it wont be soon.... I look froward to him spam posting meaningless accusations as an alternative to actually discussion again.

[Report Comment](#)

#### **PeteHockney**

05/02/2013 23:03

roadrunner2013 stop using your "common sense" and look up the census table I linked in another story. 17,755 said they cycle to work, not your imaginary 30-40,000

<http://www.neighbourhood.statistics.gov.uk/dissemi>

[Report Comment](#)

#### **roadrunner2013**

05/02/2013 20:05

""Don't join in the roadrunner13 camp of people who have to lie to make any point."" lol lol lol ... says the BIGGEST liar around who reckons he has a law degree and then comes out with a quote that his mate got his licence endorsed for riding a bike while under the influence and then was corrected by at least two posters who treat him very kindly, probably because they know he's a nut case. Honestly haddock/flannel ... all i can say is you must be immune to humiliation ! How do your county clowncil colleagues put up with you ?? lol lol RAFPML!!

[Report Comment](#)

#### **roadrunner2013**

05/02/2013 20:03

Just because it was in yesterdays news does not make it correct. What it does probably mean is 30% of the people who actually answered the question: How do you commute to work ? It appears that a lot of people did not answer a lot of the questions, like

myself. 30-40,000 people DO NOT commute by cycle. If this was the case we would be moaning that there were too many cycles on the road. In the news accepted. Accuracy of figures denied. Have a nice evening! lol.

[Report Comment](#)

---

## **haddock**

05/02/2013 16:15

With 30% of cambridges population using bikes to commute you think the fat commissioner might want to crack down on all road users. Sadly no.....he wont do that....I suspect he supports old Hawkesworth who does like to let motorists who kill people out without a ban.....

[Report Comment](#)



---

### **Nostalgia**



Featuring puzzles from the past

### **Animal Rescue**



Can you give an abandoned pet a home?

### **Blogs**



Read our excellent local blogs

### **Photo sales**



You can order prints - or even turn images into gifts

### **Announcements**



Births, marriages and deaths

### **Video**



Click here to see our latest videos

---

[Privacy Policy](#) [Terms and Conditions](#) [Company Information](#) [Advertising](#)

Cambridge Newspapers Ltd © 2013

**4Ps Marketing**

Powered Portal