



Report to: Police Authority
Agenda item: 4
Date: 27 September 2012
Subject: Chief Constable's Report
Sponsor: Chief Constable
For: Information

1. PURPOSE OF PAPER

1.1 The purpose of this report is to provide members with an overview of activity within British Transport Police (BTP) since the last report to Police Authority on 12 June 2012. The report includes an update on performance against the 2012/13 Policing Plan, the policing operation of the Olympic & Paralympic Games, activity to minimise disruption on the rail network, and progress on enhancing corporate governance arrangements across BTP.

2. POLICING PLAN PERFORMANCE

2.1 As at 16 September 2012 BTP was achieving 8 of the 11 national targets and 23 of the 31 local targets set in the 2012/13 Policing Plan. The following section highlights key areas of performance year to date. A summary of performance against all Policing Plan targets is attached at Appendix A.

2.2 The target to reduce Network Rail lost minutes at 36 agreed locations is being achieved. The minutes lost year to date for Network Rail at these locations is 77,103 minutes against a year to date target of 146,594 minutes, and last year actual of 169,259 minutes. All Areas are achieving this target, and a breakdown of performance at the individual 36 locations is detailed on Appendix A. The significant reduction (54%) in lost minutes at these locations is due to the focused activity by Areas at each location to tackle local issues such as trespass, vandalism and level crossing misuse, as well as the national disruption activity BTP is undertaking in relation to metal theft and fatality management. An update on this work is included in section four of this report.



- 2.3 Between April to August 2012 there have been 100 non suspicious fatalities on the rail network, with an average clearance time of 75 minutes. Whilst not a target in the Policing Plan, average clearance times for unexplained fatalities have reduced as a result of the Fatality Management Review and an update on this work is included in section four of this report.
- 2.4 Significant progress continues to be made in tackling metal theft. There have been 303 live cable offences year to date against a target of 513 and 669 offences against the same period last year – a 55% reduction on last year.
- 2.5 A detection rate of 54% is being achieved for serious offences, which is above target and last year's detection rate of 50%.
- 2.6 The target for sickness per employee to be less than an average of 7.3 days for the full year is also being achieved. 2.92 average days sickness have been taken by employees so far this year against a year to date target of 3.04 days.
- 2.7 At 93%, the target to respond to 95% of Olympic immediate incidents within 10 minutes was not achieved. The initial data shows that of the 118 immediate incidents, 110 were responded to by BTP within the 10 minute target. However, the command and control data from which this data has been taken is still being assessed and the confirmed position on this target will not be known until October. A breakdown of BTP's response at all Olympic stations is included in Appendix A.
- 2.8 The two remaining national targets that are currently not being achieved are to reduce the number of recorded notifiable offences and increase the hours worked by Special Constables by 10%.
- The target to reduce notifiable offences is narrowly being missed by 0.1% (29 offences), with 23,608 recorded notifiable offences against a target of 23,579 and last year position of 25,284.



- The hours worked by Special Constables totals 30,074 against a target of 31,350 (-4%), however remains an increase on last year's actual of 28,500 hours. BTP's Special Constabulary has lost 19 Special Constables this year, some of whom have taken employment within BTP as officers. Now the Olympics & Paralympics is over focus will be driven by Territorial Policing to increase volunteer hours and recruitment of new Special Constables. Progress against this target will be provided to future Authority meetings.

3. OLYMPIC & PARALYMPIC GAMES

- 3.1 The London 2012 Olympic & Paralympic Games were a great success. The delivery of the Games was supported by a highly successful transport security operation which was a result of first class planning, execution and partnership working at its highest level between the rail industry, London Underground, BTP, Home Office police forces, Olympic Delivery Authority, Transport for London, and Department for Transport (DfT). This was not only during the Games period but during many other large events held so far in 2012, including the Diamond Jubilee and the Notting Hill Carnival.
- 3.2 The increase on the transport network during the Games period was significant. Ninety eight percent of people travelled to the Olympics by rail and underground which was higher than the forecast usage of 78%. Despite this the transport system coped extremely well. Approximately 60 million passengers used London Underground (30% more than usual), 6 million used Docklands Light Railway (double the normal traffic), nearly 6 million used London Overground (47% more than usual), and 1.4 million journeys were taken on the special Games time Javelin service to Stratford International Station.
- 3.3 BTP deployed on average over each 24 hour period during the Games 770 officers to police the Olympic footprint, supported by 350 mutual aid officers from 17 Home Office forces. The feedback from the mutual aid officers was extremely positive, all commenting on the professionalism of BTP in the planning and execution of the policing operation.



- 3.4 BTP and mutual aid officers were deployed to all locations within the Olympic footprint:
- Olympic Park Zone – stations around Stratford and the Olympic Park
 - River Zone – stations around the Excel Centre, North Greenwich Arena and Greenwich
 - Central Zone – stations around other Central London venues, with officers also responding to business as usual policing on the overground and underground rail network in Central London
 - Outer Zone – stations near venues outside of Central London including Wembley, Hadleigh Farm, Broxbourne, Eton Dorney and Dorset.
 - Football venues – stations near football venues at Cardiff, Coventry, Glasgow, Manchester and Newcastle.
- 3.5 The resourcing plans ensured all BTP Areas retained sufficient resources to police business as usual demands as well as providing sufficient resilience for BTP to respond to a non Olympic major incident should one occur. Vacancies left by officers deployed to Olympic duties were backfilled by overtime and rest day working which was funded from the DfT Olympic budget.
- 3.6 A presentation on BTP's policing operation during the Games is due to be given to Performance Review group on 17 October. However, a summary of crimes and incidents during the Games period is as follows:
- BTP responded to 1248 notifiable offences across the whole rail network during the period of the Games, 12.8% less than the same period last year.
 - There were 1144 crimes recorded within the Olympic footprint, which is 23.9% increase against the same locations and period last year. Bearing in mind the significant increase in passenger numbers this increase was to be expected. Main crime types were theft of passenger property, public order, violence against the person, fraud, trespass and drug offences.
 - BTP dealt with 141 disruption crimes, mostly trespass, on Olympic routes.



- BTP dealt with 4 non suspicious non fatal incidents and 1 sudden death on Olympic routes. Across the whole rail network during the Games period BTP dealt with 44 fatalities, 4 sudden deaths and 19 non fatal incidents, 2 of which were later fatal.
- 668 arrests were made by BTP within the Olympic footprint, primarily for theft of passenger property, public order, trespass, violence against the person, fraud, and drug offences.
- 905 intelligence reports were submitted.

3.7 The table below summarises the position for the DfT Olympics budget as at Period 5. The forecast DfT funded Olympics expenditure is currently £800k over budget. This is due to the impact of the unsocial hours and accommodation allowance increase agreed as part of the Winsor Review. It was estimated this would add £1.6m to the amount of funding required but action taken by Assistant Chief Constable Thomas has mitigated this pressure to £800k. BTP and the BTPA Finance Director have requested this amount from the DfT to cover these additional costs.

The table below details the DfT funded Olympic expenditure as at period 5.

Revenue Budget for the 2013 Financial Year	YTD Position as at Period 5 - 2013				Forecast Position as at Period 5 - 2013					
	Approved Budget	Actual	Variance		Original Budget	Budget Movements	Revised Budget	Forecast	Variance	
	£'000	£'000	£'000	%	£'000	£'000	£'000	£'000	£'000	%
Expenditure										
Staff Costs	686	1,094	(408)	(59.5%)			10,818	11,618	(801)	0.0 %
Non Staff Costs	428	268	160	37.4 %			1,966	1,966	0	0.0 %
Total Expenditure:	1,114	1,362	(248)	(22.3%)	10,918	1,866	12,783	13,584	(1,206)	(9.4%)
Total Income:	(1,114)	(1,436)	322	(28.9%)	(10,918)	(1,866)	(12,783)	(12,783)	0	0
Net Dft Funded Expenditure	0	(74)	74	(100.0%)	0	0	0	800	(800)	(100.0%)

4. DISRUPTION ACTIVITY

4.1 Fatality Management

The Fatality Management Project led to the introduction of a risk managed, evidence based categorisation model aimed at reducing the amount of fatalities initially classified as unexplained. Members will remember receiving a detailed presentation on the review at June's meeting.



4.1.1 The new measures have already yielded some significant results:

- A 61% reduction in unexplained classifications, which have reduced from 47 in 2011/12 to 18 in 2012/13.
- A 30% reduction in Network Rail delayed minutes (145,118 minutes in April – August 2011 against 208,419 minutes the same period last year).
- The average clearance time for unexplained fatalities has reduced from 198 minutes last year to 140 minutes in 2012.
- The combined average time to deal with both non suspicious and unexplained fatalities (01.04.12 to 21.09.12) is 84 minutes compared with 115 minutes in 2011/12.

4.2 **Metal theft**

4.2.1 There has also been significant progress in tackling metal theft:

- A 55% reduction in live metal theft offences
- A 40% reduction in non live metal theft offences
- Detection rate for live offences increased to 36% (against 11% last year)
- Detection rate for non live offences is 25% (same as last year)

4.2.2 Since the establishment of the National Metal Theft Taskforce Programme (NMTTP) BTP has organised three periods of national action which have resulted in the participation of 35 police forces and a wide range for government agencies and partners including Network Rail. In total these periods of action have resulted in 1957 scrap metal dealer (SMD) site visits, over 400 arrests and 206 motor vehicles seized. Further national days of action are scheduled with the next one taking place in October.

4.2.3 The NMTTP has supported 74 bids for funding and has committed £3.8m of financial support for activity aimed at reducing metal theft. Some of these bids provide for operational periods that vary from days to months, some that have been funded will run until March 2013. Some bids are for overt high profile operations including road side checks of itinerant or mobile collectors, others are for covert operations targeting thieves, handlers and organised criminal gangs.



- 4.2.4 The NMTTP has financially supported the implementation of Operation Tornado tactics by across the country. Operation Tornado is an enhanced identification measures initiative agreed by British Metals Recycling Association (BMRA) and the police. Tornado has now been launched in eight out of eleven regions with the three remaining (Wales, Scotland and West Midlands) expected to launch in the near future.
- 4.2.5 One of the objectives of the NMTTP is to visit 90% of all SMDs. Following the visit, the SMD will be assessed and a RAG assessment made which will inform the frequency of further visits. As the regions roll out the tactics, the number of SMDs visited will continue to increase to achieve the 90% target (currently SMDs visited in regions ranges from 50 to 100%).
- 4.2.6 Organised criminal groups (OCG) are also being targeted by police. One OCG of six offenders are currently on remand awaiting trial for lead theft and conspiracy in the Lincolnshire area. In South Yorkshire, three individuals were arrested for a series of offences spanning weeks in May. Prior to their arrest there were 53 crimes recorded and it is believed these three were at the centre of this series of thefts.
- 4.2.7 The NMTTP ran an operation into a group that were looking to exploit the maintenance and upgrade work being carried out by Network Rail on the West Coast Mainline in and around Rugby. A sub contractor conspired with a plant manager to steal rail and sleepers which should have been taken to authorised recyclers with Network Rail receiving the value of the metal. The investigation revealed that the offenders used their position, and others within the rail sub-contract industry, to steal up to 3,500 tonnes of rail worth up to £1.5m. Seven persons were arrested and charged and were sentenced to between 18 to 30 months at Birmingham Crown Court on 2 July 2012.

5. OVERVIEW OF INVESTIGATIONS

- 5.1 The following section provides members with an overview of a small selection of investigations that have been undertaken and subsequent court results.

- 5.2 Operation Wahoo - BTP officers investigated an organised crime group which, over a period of 12 months, undertook online fraudulent transactions using compromised card data. Fraud losses to Eurostar were in excess of £220k, with a further £504k worth of attempted fraudulent transactions. The online Eurostar tickets were purchased in the UK but collected at Paris Gare de Nord station from non-Eurostar ticket vending machines.

Four arrests were made in January 2012 and electronic equipment recovered which contained over 900 sets of compromised card data. All four were charged with conspiracy to defraud Eurostar and three were remanded in custody. Following these arrests, Eurostar confirmed that fraud losses had reduced by 50% for the same period (6 weeks post arrest). Three defendants pleaded guilty on their first appearance at Crown Court and the fourth was found guilty following a three day trial. All were sentenced on 25 July 2012 to 8 years' imprisonment in total, with a £7,700 confiscation order.

- 5.3 Operation Buxton - In October 2011 a lone female was subjected to a sexual assault at Leagrave Station. In December 2011 another sexual assault occurred on a lone female, this time on a train in the Luton area. In February 2012 a young female was forced into a train toilet and raped. Her mobile phone was also stolen. The offender left the train at Harlington and offered the stolen mobile phone as surety for a taxi journey to Leagrave. The taxi driver refused, and the offender ran over the railway tracks and caught another train to Leagrave where he again offered the mobile phone as surety for a lift to a housing estate in Leagrave.

BTP officers investigating the rape quickly linked this attack with the previous two assaults. The investigation quickly led to the identification of the offender and he was arrested and charged with six counts relating to the attacks. Following a recent trial at Luton Crown Court, he was found guilty of all counts and was remanded in custody for sentencing on 26 October 2012. The trial Judge praised BTP for their investigation.

- 5.4 Operation Flyer - In December 2011 officers from BTP's Covert Investigation Unit arrested three men in Manchester for conspiracy to steal. The operation resulted in the offenders being caught in possession of property from a recent theft and also bank evidence linking them to another offence. Further enquiries into their activities were made via their mobile phones, and this linked them to other offences which had taken place throughout England in the previous few weeks.

On 11 July 2012 the defendants appeared before Blackfriars Crown Court for sentencing, having previously pleaded guilty to charges of conspiracy to steal and conspiracy to defraud by false representation. The Judge sentenced one defendant to 3 years 6 months imprisonment, and a second to 4 years imprisonment, having taken the view that the conspiracy was over £100k. The third defendant is waiting to be sentenced pending medical reports.

6. CORPORATE GOVERNANCE

- 6.1 Following the lessons learned from the three matters previously reviewed by BTPA (WAN, pensions unauthorised payments, and pensions write off), the Chief Constable and Deputy Chief Constable are determined that corporate governance matters are subjected to the highest level of scrutiny and focus, and that a culture of compliance is developed and embedded throughout the Force.
- 6.2 A report on measures being implemented to improve corporate governance and embed a culture of compliance within BTP is due to be presented to Audit Committee on 26 September. The purpose of this section of the Chief Constable's Report is to provide members with an overview of this work. A review of the WAN project is also taking place and a 'lessons learned' report is due to be presented to Finance Group on 17 October.
- 6.3 BTP has developed a short and medium term approach, which is focused on review, control, audit and performance management in the short term, and education, awareness and personal responsibility in the medium term. The new measures include:



- The main issues from the three matters have been identified and action taken to prevent future recurrence.
- The revised SCT portfolios (attached at Appendix B), which take effect on 1 October 2012, will support an enhanced clarity of governance and responsibilities held by each member of the Strategic Command Team. Ownership for corporate governance across the Force will now be held by the Deputy Chief Constable to ensure executive oversight and drive for improvement.
- A new Force Governance Meeting Structure (attached at Appendix C) to improve information sharing, decision making, effective oversight and governance of issues.
- Exercise of tight financial grip through four weekly Finance Reviews chaired by the Director of Corporate Resources with all budget holders.
- Resource Approval Panel to provide corporate assurance that recruitment of any staff and/or any establishment changes comply with BTP policy and DFT requirements.
- A review of procedures to manage the process of internal audit and management responses.
- Operation Enterprise, the transformation programme taking place across the Corporate Resources portfolio to deliver changes to structures and improvements to critical business processes.
- A joint project between BTP, BTPA and the internal auditors to simplify and update the Corporate Code of Governance. The product of this activity, once approved by Audit Committee, will be communicated across BTP through seminars, Force level meetings, and formalised and structured training.

7. NATIONAL MEETINGS AND EVENTS

- 7.1 The Chief Constable has attended a variety of meetings and events with key stakeholders over the last three months. These include meetings with:
- Rail owning groups and train operators, including Dominic Boothe, Abellio UK; Mike Brown, London Underground; Rob Brighouse, Chiltern Railways; Michael Roberts, ATOC; Ruud Haket, Greater Anglia and Ian Bevan, Northern. Topics discussed included the Olympics, disruption, CCTV, cycle crime, level crossings, and general



performance matters. Feedback from all the stakeholders was extremely positive, with full support for BTP. However, they all also raised matters including greater visibility, new opportunities, specific areas they would like more focus on, and value for money, which the Chief Constable is taking forward with the Strategic Command Team and Area Commanders.

- Philip Rutnum, Permanent Secretary DfT, to brief him on the work of BTP.
- Bernard Hogan-Howe, Commissioner of the MPS to discuss Olympics, policing in London, and police reform.
- Stephen Otter, Her Majesty's Inspector of Constabulary, to discuss the HMIC inspection programme.
- James Cleverly, new Chair of the London Resilience Forum and London Assembly member. Items discussed included the Olympics and best practice, interoperability between emergency services, the challenges of replacing Airwave, and media and communications.
- Attendance at the Association of Railway Executives Autumn session where Peter Strachan, Director General DfT, spoke about DfT's rail franchising programme.
- A visit to BTP by Lord Rosser, who has a political interest in transport and the criminal justice system. The Chief Constable briefed Lord Rosser on the work of BTP, followed by Lord Rosser spending time on patrol with officers from London South Area.
- A visit by DB Schenker representatives from Germany (Professor Neubeck who leads on global security for DB Schenker). They visited St Pancras and received briefings on BTP's counter terrorism work, fatality management, metal theft and the Olympics.

7.2 The Chief Constable has also spoken at two events – the Annual National Security Summit where he gave a presentation on security and transport infrastructure, and the Professional Policing Seminar where he gave a lecture on successfully managing relationships between the police and the media.



- 7.3 The Deputy Chief Constable has also met Sarah Green, new IPCC Commissioner to discuss complaint and misconduct matters, and Richard Ottoway MP in relation to metal theft and proposed changes to the Scrap Metal Dealers Bill.

8. RECOMMENDATIONS

- 8.1 That members note the content of this report.



Strategic Command Team

Chief Constable

- Overall command, direction and control of BTP

ACPO PORTFOLIO

- ACPO Chair of Communications Advisory Group

DCC

- Corporate Governance
- Operational organisational delivery
- Performance and Analysis
- Portfolio Management
- Business Change
- Audit & Inspection
- Futures Programme
- Strategic & Policing plans
- Professional Standards Department
- Media & Marketing

ACPO PORTFOLIO

- ACPO lead for Metal Theft
- ACPO lead for Digital Forensic Triage
- ACPO lead for CCTV

Director of Corporate Resources

- Human Resources
- Learning and Development
- Equality, Diversity and Human Rights
- Finance
- Procurement
- Estates
- Fleet
- SIRO
- Communications and Technology
- Information Management

ACC Territorial Policing

Operational

- Area Performance
- Response
- Patrol
- Contact Handling
- Suicide Prevention
- Crime & Investigation
- Intelligence
- Complementary Policing
- Industry Engagement
- Welsh affairs

Policy

- Fatalities
- Vulnerable People
- Metal theft
- Community and Stakeholder Engagement
- Stop and Search
- ASB

Senior User

- Estates

ACC Central Operations

Operational

- Crime Recording
- Counter Terrorism
- Firearms
- CCTV
- Criminal Justice
- Football
- Police Dogs
- Forensics
- Airwave
- Event Planning
- Major Incidents

Policy

- Custody
- Business Continuity
- Driving Standards
- Resilience

Senior User

- Uniform
- Vehicles
- L&D

ACC Scotland

- Scottish Area
- Scottish Affairs
- Misconduct Hearings#
- ACPOS

Senior User

- ICT

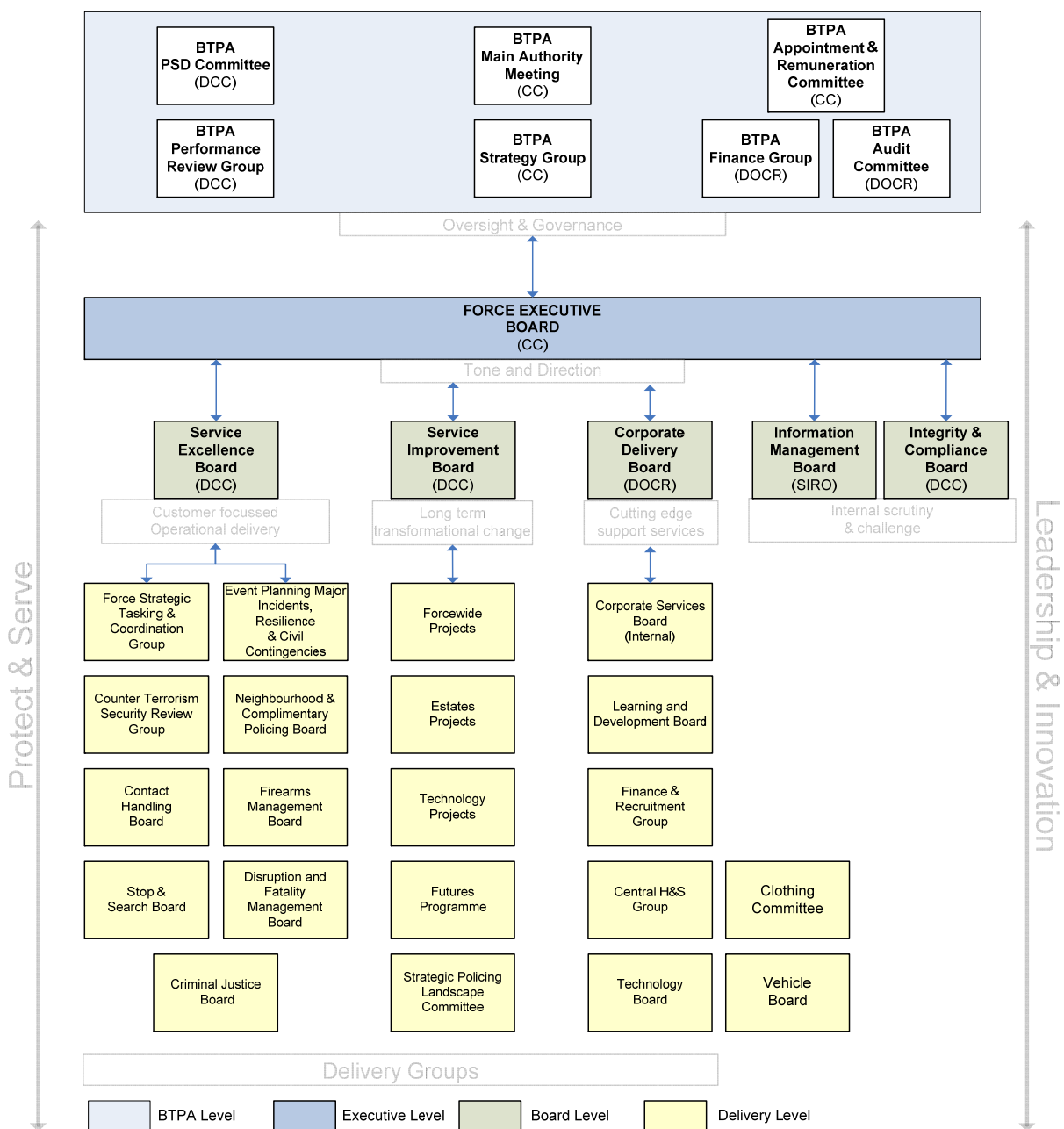
ACPO PORTFOLIO

- ACPOS lead for Police Search

1 October 2012



Force Governance Meeting Structure



2012-13 POLICING PLAN: NATIONAL TARGETS

Updated to: 16 Sep 2012

Targets N1, N3, N5 & N6 are updated to: 16 Sep 2012 (Last month to: 26 Jul 2012)
 Other Targets are updated to: 31 Aug 2012 (Last month to: 30 Jul 2012)

Key:

GREEN	Achieving target
AMBER	Failing target by < 5%
RED	Failing target by ≥ 5%

	London North	London South	London Underground	North Eastern	North Western	Scottish	Wales & Western	FHQ	BTP Total
Number of National Targets being achieved									
Number of National Targets	7	7	6	7	7	7	7	5	11
Number being achieved now	6	5	3	7	6	4	5	2	8
Number last month	7	6	3	7	6	4	5	2	9

	London North	London South	London Underground	North Eastern	North Western	Scottish	Wales & Western	FHQ	BTP Total
Number of Local Targets being achieved									
Number of Local Targets	3	5	6	4	4	5	4		31
Number being achieved	2	5	4	4	2	3	3		23
Number last month	2	4	4	4	4	3	3		24

N1 Reduce NWR lost minutes at 36 agreed locations / routes

	London North	London South	London Underground	North Eastern	North Western	Scottish	Wales & Western	FHQ	BTP Total
YTD Performance	26,657	22,209		15,739	4,332	1,446	6,720		77,103
YTD Target	47,804	40,767		24,700	19,186	2,616	11,521		146,594
Last month performance	23,284	11,669		13,026	4,104	1,191	4,198		57,472
Last month target	33,095	28,223		17,101	13,282	1,810	7,976		101,487
Better / worse	↑	↓		↑	↑	↑	↓		↑
Same period last year	57,523	50,175		30,224	10,366	3,334	17,638		169,259

N2 Respond to 95% of Olympic Immediate Incidents within 10 minutes

Final 2012-13 Performance	93%	93%
2012-13 Target	95%	95%
Last month performance	n.a.	n.a.
Last month target	n.a.	n.a.
Better/worse (Linear)		

N3 Reduce live cable offences

	London North	London South	London Underground	North Eastern	North Western	Scottish	Wales & Western	FHQ	BTP Total
YTD Performance	19	31	32	85	41	22	73		303
YTD Target	65	29	19	211	56	31	101		513
Last month performance	13	22	22	57	33	18	47		212
Last month target	45	20	13	146	39	21	70		355
Better/worse (Linear)	↓	↑	↑	↓	↑	↑	↓		↑
Same period last year	75	24	6	316	81	41	126		669

N4 Average clearance time for non-suspicious fatalities to be less than 90 minutes

	London North	London South	London Underground	North Eastern	North Western	Scottish	Wales & Western	FHQ	BTP Total
YTD Performance	79	66	59	76	67	86	83		75
YTD Target	90	90	90	90	90	90	90		90
Last month performance	82	65	59	76	69	86	80		76
Last month target	90	90	90	90	90	90	90		90
Better/worse (Linear)	↑	↓	↓	↓	↑	↓	↓		↑
Same period last year	77	70	63	99	59	138	84		78

N5 Reduce the number of recorded notifiable offences (excluding police generated)

	London North	London South	London Underground	North Eastern	North Western	Scottish	Wales & Western	FHQ	BTP Total
YTD Performance	5,222	5,743	5,342	2,095	1,913	788	2,505		23,608
YTD Target	5,047	5,709	5,143	2,290	1,915	875	2,597		23,579
Last month performance	3,283	3,866	3,848	1,399	1,314	557	1,641		15,908
Last month target	3,494	3,953	3,560	1,585	1,326	606	1,798		16,324
Better/worse	↓	↓	↑	↓	↓	↑	↓		↓
Same period last year	5,420	6,098	5,297	2,551	2,106	967	2,845		25,284

N6 Maintain the 2011-12 detection rate for serious VAP, sexual offences, robbery and staff assaults

	London North	London South	London Underground	North Eastern	North Western	Scottish	Wales & Western	FHQ	BTP Total
YTD Performance	55%	55%	43%	71%	61%	51%	50%		54%
YTD Target	52%	47%	48%	65%	57%	68%	53%		52%
Last month performance	52%	55%	45%	76%	53%	54%	48%		53%
Last month target	52%	47%	48%	65%	57%	68%	53%		52%
Better/worse	↑	↑	↓	↓	↑	↓	↑		↑
Same period last year	56%	43%	45%	59%	54%	71%	53%		50%

N2 detail: Achievement of Olympic Target, by station

	No. of Immediate Incidents	Responses within 10 mins			No. of Immediate Incidents	Responses within 10 mins	
		Number	Percentage			Number	Percentage
Baker Street	3	3	100%	Maze Hill	0	0	-
Bank	1	1	100%	North Greenwich	1	0	0%
Blackheath	1	0	0%	Paddington	6	5	83%
Bond Street	0	0	-	Piccadilly Circus	1	1	100%
Canary Wharf	2	2	100%	Pontoon Dock	0	0	-
Charing Cross	0	0	-	Prince Regent	0	0	-
Charlton	2	2	100%	Southfields	0	0	-
Custom House	3	2	67%	South Wimbledon	0	0	-
Earls Court	1	1	100%	Star Lane	0	0	-
Ebbsfleet	0	0	-	St James's Park, London	0	0	-
Embankment	2	2	100%	Stratford	5	5	100%
Euston	6	6	100%	Temple	1	1	100%
Green Park	1	1	100%	Tower Hill/Tower Gateway	1	1	100%
Hackney Wick	2	1	50%	Victoria	18	18	100%
Hyde Park Corner	0	0	-	Waterloo	13	12	92%
Kings Cross/St Pancras	19	19	100%	Wembley Central	0	0	-
Knightsbridge	2	2	100%	Wembley Park	2	2	100%
Lewisham	2	2	100%	Wembley Stadium	0	0	-
Liverpool Street	6	5	83%	West Ham	2	2	100%
London Bridge	8	8	100%	Westminster	3	3	100%
Marble Arch	1	1	100%	West Silvertown	0	0	-
Maryland	0	0	-	Woolwich Arsenal	3	2	67%
Olympic station totals				118	110	93%	

2012-13 POLICING PLAN: NATIONAL TARGETS (continued)

Targets N7 - N11 are updated to: 31 Aug 2012 (Last month to: 30 Jul 2012)

Key:

GREEN
AMBER
RED

Achieving target
Failing target by < 5%
Failing target by ≥ 5%

	London North	London South	London Underground	North Eastern	North Western	Scottish	Wales & Western	FHQ	BTP Total
N7 Average sickness per employee to be less than an average of 7.3 days									
YTD Performance	2.91	2.15	2.43	2.33	3.09	4.91	2.86	3.38	2.92
YTD Target	3.04	3.04	3.04	3.04	3.04	3.04	3.04	3.04	3.04
Last month performance	2.22	1.71	1.77	1.90	2.34	3.54	2.23	2.59	2.23
Last month target	2.43	2.43	2.43	2.43	2.43	2.43	2.43	2.43	2.43
Better/worse	↓	↓	↓	↑	↓	↓	↓	↓	↓
Same period last year	2.75	3.42	2.18	2.47	2.75	3.40	2.97	2.41	2.66
N7a Average sickness per police officer to be less than an average of 7.3 days									
YTD Performance	3.33	1.95	2.31	2.32	2.71	5.80	3.27	1.91	2.75
YTD Target	3.04	3.04	3.04	3.04	3.04	3.04	3.04	3.04	3.04
Last month performance	2.66	1.51	1.75	1.76	2.05	4.16	2.44	1.58	2.11
Last month target	2.43	2.43	2.43	2.43	2.43	2.43	2.43	2.43	2.43
Better/worse	↓	↓	↓	↓	↓	↓	↓	↑	↓
Same period last year	2.34	3.36	2.30	2.63	2.51	3.75	3.32	1.97	2.67
N7b Average sickness per PCSO to be less than an average of 7.3 days									
YTD Performance	2.45	5.02	2.00	5.27	4.94		2.90		3.14
YTD Target	3.04	3.04	3.04	3.04	3.04		3.04		3.04
Last month performance	1.32	4.54	1.66	5.08	3.74		2.49		2.47
Last month target	2.43	2.43	2.43	2.43	2.43		2.43		2.43
Better/worse	↓	↑	↑	↑	↓		↑		↓
Same period last year	3.40	4.98	3.66	5.51	7.47		4.29		4.40
N7c Average sickness per staff employee to be less than an average of 7.3 days									
YTD Performance	1.50	1.43	3.02	1.67	3.58	0.46	1.30	4.07	3.21
YTD Target	3.04	3.04	3.04	3.04	3.04	3.04	3.04	3.04	3.04
Last month performance	1.22	0.98	1.89	1.61	2.72	0.44	1.24	3.06	2.40
Last month target	2.43	2.43	2.43	2.43	2.43	2.43	2.43	2.43	2.43
Better/worse	↑	↓	↓	↑	↓	↑	↑	↓	↓
Same period last year	3.91	2.85	1.40	0.81	1.10	1.40	0.83	2.59	2.26
N8 Reduce FHQ costs by £500k								£M	£M
YTD Performance								£510,000	£510,000
YTD Target								£500,000	£500,000
Last month performance								£510,000	£510,000
Last month target								£500,000	£500,000
Better/worse								←	←
Same period last year								n.a.	n.a.
N9 Reduce manually produced performance reports by 20%									
YTD Performance								75	75
YTD Target								103	103
Last month performance								71	71
Last month target								83	83
Better/worse								↑	↑
Same period last year								n.a.	n.a.
N10 Maintain the proportion of resources devoted to NPT and response policing between 8pm and 1am									
YTD Performance	16%	19%	19%	18%	19%	19%	17%		18%
YTD Target	15%	15%	17%	18%	19%	22%	18%		17%
Last month performance	16%	18%	20%	18%	19%	19%	17%		18%
Last month target	15%	15%	17%	18%	19%	22%	18%		17%
Better/worse	←	↑	←	←	←	←	←		←
Same period last year	15%	15%	17%	18%	20%	22%	18%		17%
N11 Increase the hours worked by Special Constables by 10%									
YTD Performance								30,074	30,074
YTD Target								31,350	31,350
Last month performance								18,805	18,805
Last month target								25,457	25,457
Better/worse								↓	↓
Same period last year								28,500	28,500

2012-13 POLICING PLAN: LOCAL TARGETS, LONDON AREAS

Targets LN3, LS1-3A, LS4 and LU1-4 are updated to: **16 Sep 2012** (Last month: **26 Jul 2012**)
Other Local, London Area Targets are updated to: **31 Aug 2012** (Last month: **30 Jul 2012**)

Key:

Achieving target **GREEN**
 Failing target by < 5% **AMBER**
 Failing target by ≥ 5% **RED**

London North	Fatality Mngt: partial re-opening within 50 mins	Escort 33% more football trains	Improve Det. Rate for rail staff abuse
	LN1	LN2	LN3
YTD Performance	36	87	56%
YTD Target	50	49	60%
Last month performance	38	65	53%
Last month target	50	39	60%
Better/worse (Linear)	↑	↑	↑
Same period last year	30	n.a.	60%

London South	Maintain metal theft det. rate	Level crossing detections	Cycle crime detection rate	Cycle crime initiatives	ASB: detections	NPT: joint ops
	LS1	LS2	LS3a	LS3b	LS4	LS5
YTD Performance	26%	554	31%	182	2,049	434
YTD Target	21%	406	15%	83	1,997	427
Last month performance	28%	421	36%	115	1,502	280
Last month target	21%	281	15%	66	1383	342
Better/worse (Linear)	↓	↓	↓	↑	↓	↑
Same period last year	25%	488	15%	n.a.	1938	439

London Underground	Reduce thefts per million journeys	Increase theft detections by 7%	Reduce staff assaults per 10m journeys	Increase sexual assault detections by 15%	Improve ERU vehicle response times by 20% (Mins per mile)	Reduce "under train" passenger lost hours by 5% (Hours / incident)
	LU1	LU2	LU3	LU4	LU5	LU6
YTD Performance	4.98	247	3.84	32	3.4	11,345
YTD Target	4.91	125	4.38	31	5.0	7,235
Last month performance	5.42	160	4.00	21	3.5	10,737
Last month target	4.91	87	4.38	21	5.0	7,235
Better/worse (Linear)	↑	↑	↑	↑	↑	↓
Same period last year	5.27	124	4.57	20	n.a.	n.a.

Disruption targets: performance by route

	YTD target breakdown	YTD Performance	Last month	Same period Last Year
Brimsgate - Broxbourne	9,880	5,320	4,945	8,822
Ilford - Gidea Park	9,469	6,551	5,343	12,911
Ipswich - Trimley	1,603	4,044	3,551	2,245
Bletchley - Bourne End	15,725	4,943	4,183	20,445
Southall	6,746	4,196	4,166	10,494
Reading - Southcote	4,381	1,603	1,096	2,606
LN Totals	47,804	26,657	23,284	57,523

	YTD target breakdown	YTD Performance	Last month	Same period Last Year
Farnborough - Woking	6,687	161	125	11,550
Wimbledon	9,528	15,788	7,705	18,588
Gillingham - Rochester	2,233	1,206	565	4,288
Sittingbourne - Faversham	1,085	433	249	1,330
Lancing - London Rd	2,406	3,644	2,367	2,076
Selhurst - Balham	18,828	977	658	12,343
LS Totals	40,767	22,209	11,669	50,175

2012-13 POLICING PLAN: LOCAL TARGETS, NON-LONDON AREAS

Targets NE2-4, NW1-2, SC1-4, WW1-4 are updated to: 16 Sep 2012 (Last month: 26 Jul 2012)
Other Local, non-London Area Targets are updated to: 31 Aug 2012 (Last month: 30 Jul 2012)

Key:

Achieving target	GREEN
Failing target by < 5%	AMBER
Failing target by ≥ 5%	RED

Disruption targets: performance by route

North Eastern	15 football policing operations	Reduce cycle offences	Maintain live cable detection rate	ASB offenders at selected locations
	NE1	NE2	NE3	NE4
YTD Performance	6	173	32%	495
YTD Target	6	189	11%	381
Last month performance	3	103	19%	363
Last month target	2	131	11%	264
Better/worse (Linear)	↓	↓	↑	↓
Same period last year	n.a.	212	8%	369

North Western	Football-related offences: det. rate	Reduce staff assaults	6 Level X PSPs at agreed locations	5 ASB PSPs at agreed locations
	NW1	NW2	NW3	NW4
YTD Performance	81%	125	0	0
YTD Target	86%	121	0	0
Last month performance	98%	80	0	0
Last month target	86%	84	0	0
Better/worse (Linear)	↓	↓	↔	↔
Same period last year	78%	139	n.a.	n.a.

Scottish	ASB offenders detected	Reduce staff assaults	Increase sectarian offenders detected	Increase Level X offences detected	Quality of Service
	SC1	SC2	SC3	SC4	SC5
YTD Performance	335	29	17	61	94%
YTD Target	247	37	21	105	90%
YTD Linear Target	210	20	14	43	94%
Last month target	171	26	15	72	90%
Better/worse (Linear)	↑	↓	↓	↓	↔
Same period last year	298	44	23	136	90%

Wales & Western	Aggression towards staff offences	ASB offenders detected	Staff assault det. rate, Welsh Sector	Reduce number of delayed trains, Welsh Sector
	WW1	WW2	WW3	WW4
YTD Performance	287	635	55%	710
YTD Target	324	543	62%	894
Last month performance	195	384	45%	489
Last month target	224	376	62%	640
Better/worse (Linear)	↓	↑	↑	↓
Same period last year	312	574	61%	1108

	YTD target breakdown	YTD Performance	Last month	Same period Last Year
Sheffield - Mexborough	4,747	4,951	4,583	5,602
Doncaster - Thorne	3,487	1,014	767	5,197
Castleford / Knottingley Areas	4,164	401	349	5,468
Morley - Crossgates	6,943	2,483	1,659	5,973
Bowesfield - Norton South	4,356	1,461	323	6,436
Leicester - Wigston North	1,003	5,429	5,345	1,548
NE Totals	24,700	15,739	13,026	30,224

	YTD target breakdown	YTD Performance	Last month	Same period Last Year
Weaver - Winsford	12,910	239	213	2,052
Bolton - Salford Crescent	2,259	595	584	3,734
Slade Lane - Stockport	727	2,116	2,102	1,469
Rochdale - M/cr Victoria	1,372	390	308	1,698
Bootle Branch - Earlestown	1,380	436	344	1,069
Preston - Euxton	538	556	553	344
NW Totals	19,186	4,332	4,104	10,366

	YTD target breakdown	YTD Performance	Last month	Same period Last Year
Hyndland/Hyndland loop	397	12	9	839
Newton - Rutherglen East	150	93	70	266
Glasgow Central	365	474	417	320
Edinburgh	424	114	20	300
Shields - Paisley Gilmour St.	976	493	486	1,171
Edinburgh - Haymarket	304	260	189	438
SC Totals	2,616	1,446	1,191	3,334

	YTD target breakdown	YTD Performance	Last month	Same period Last Year
Swindon	787	381	293	1,344
Stapleton Road	832	309	309	668
Uphill	909	22	22	1,963
Nuneaton	3,116	778	463	5,419
Birmingham New Street	1,590	2,228	1,636	1,391
Galton Jn - Wolverhampton	4,287	3,002	1,475	6,853
WW Totals	11,521	6,720	4,198	17,638