

Welcome michael.daventry@btp.pnn.police.uk | [Log out](#)[Search the site](#) ENTER TEXT HERE

TRANSPORT

Briefing

[Front page](#) [News & analysis](#) [Intelligence & resources](#) [Agenda & monitors](#) [Power 200](#) [Subscribe](#) [About](#)

[News](#) [Analysis](#)

Mega crane brought in for cable car lifts

Posted 05/03/12

The UK's largest crawler crane has been hired to help erect the Emirates Air Line, London's new cable car cross-river link.

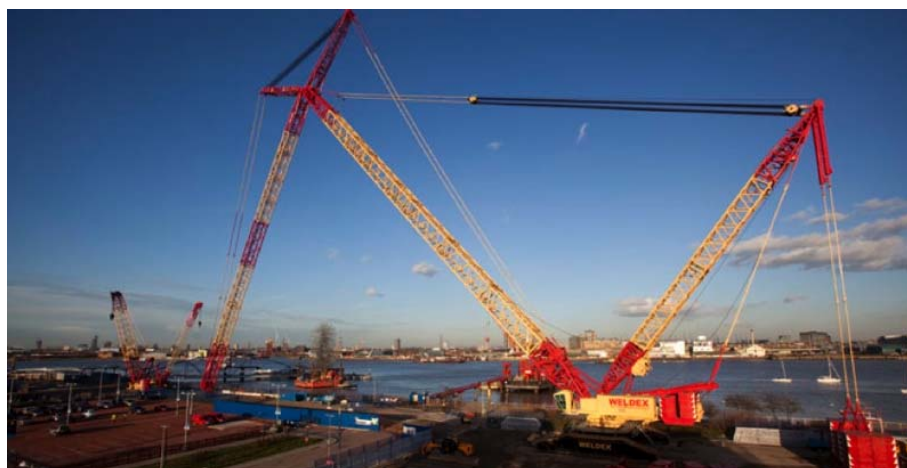
Supplied and operated by Inverness-based Weldex, the crawler crane runs on tracks (rather than wheels) to aid mobility and was put together on-site over a period of two weeks and delivered on more than 70 articulated lorries. When fully assembled it will have a reach of 120 metres and a height of 183 metres.

The crane is being used to erect the South Tower of the cable car this week following construction of the North

Intermediate Tower at the end of last month. Once complete the South Tower will be the tallest of the three towers and will be the only one built in the Thames itself. Made up of approximately 6,500 steel pieces the total weight when finished will be 568 tonnes, which means it will also be the heaviest tower.

Danny Price, TfL's operations manager for the project, said: "The Emirates Air Line is fast taking shape, one of the three towers is already complete with the second due to be completed shortly and work is about to get underway on the largest of the main towers, which will rise to 90 metres in height. Having one of the largest cranes in the country on site highlights the sheer scale of the job at hand. We are on track to have this new transport scheme opening this summer."

When completed the Emirates Air Line will have capacity to carry up to 2,500 people per hour across the River Thames between the O2 and ExCeL centres. Mace is Transport for London's design, build and operate contractor for the project.



RELATED ARTICLES

[Double Thames crossing consultation launched](#)
[Johnson pitches Silvertown tunnel and ferry plans](#)
[Emirates named as Thames cable car sponsor](#)
[River Thames cable car construction gets underway](#)
[Cable car sponsorship opportunity advertised](#)
[Mace signed up to build £50m London cable car...](#)
[TfL factors CSR cuts into updated business plan](#)
[Thames cable car given green light by Milton](#)
[DLR takes on cable car as Stratford opening slips](#)
[TfL primes bridge, ferry, ELL2 for 2011 approvals](#)

[News index](#) [Front page](#)

[Front page](#) [News & analysis](#) [Intelligence & resources](#) [Agenda & monitors](#) [Power 200](#) [Subscribe](#) [About](#)

Transport Briefing is published by [Acumen Intelligence Ltd](#). Unless otherwise specified all content © Acumen Intelligence 2012.
 We've been writing about transport infrastructure since 2002 - we also produce the [Crossrailnews](#) and [HS2 News](#) websites.
 Contact Transport Briefing: email editor@transportbriefing.co.uk Follow us on Twitter [@transportb](#).